

LOC/DME I-DDO <b>110.5</b> Chan <b>42</b>	APP CRS <b>005°</b>	Rwy Idg TDZE <b>88</b> Apt Elev <b>96</b>	<b>10000</b>
---	------------------------	---	--------------

# ILS RWY 35L (SA CAT I)

ORLANDO INTL (MCO)

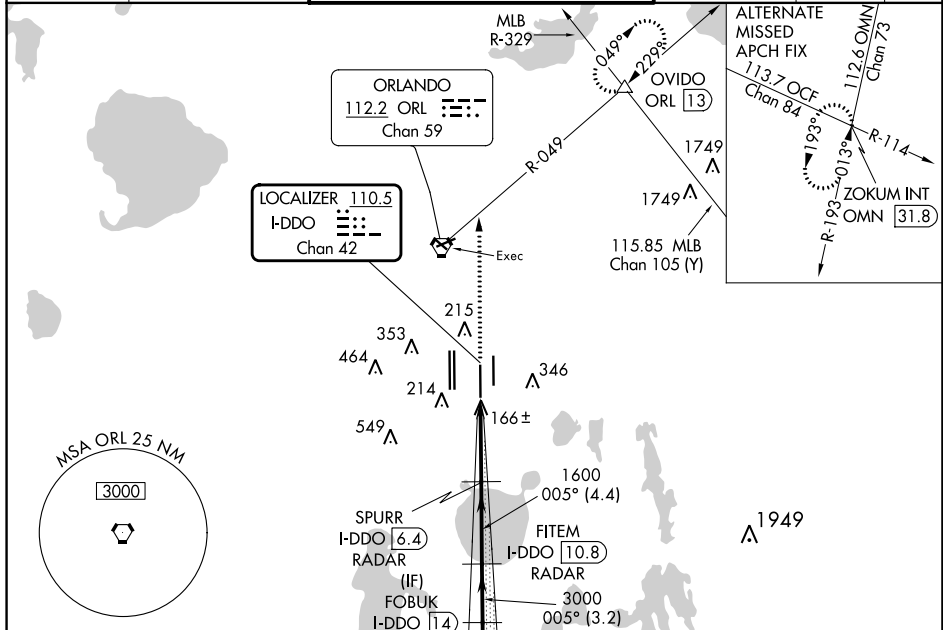
RADAR required for procedure entry. DME or RADAR required.

Requires specific OPSPEC, MSPEC or LOA approval. Simultaneous approach authorized. Bright lights on highway midway between Rwy 35L and Rwy 35R may be mistaken for runway lights. When using alternate missed approach, simultaneous approach NA.

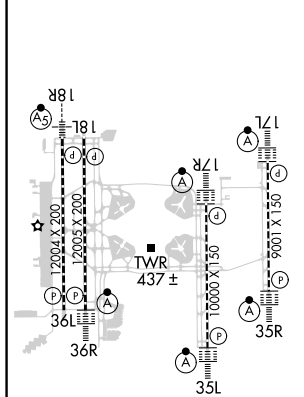
ALSF-2

MISSED APPROACH: Climb to 3000 on heading 005° and ORL VORTAC R-049 to OVIDO INT/ORL 13 DME and hold.

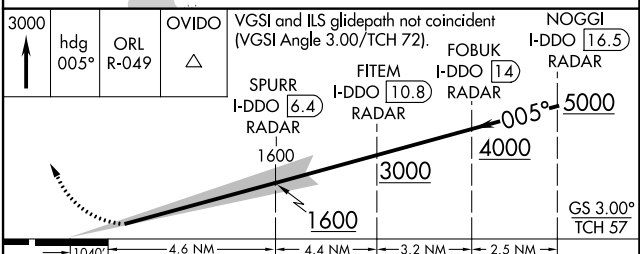
D-ATIS ARR <b>121.25</b> DEF <b>120.525</b>	ORLANDO APP CON <b>124.8 307.0</b>	ORLANDO TOWER <b>118.45 253.5</b> (Rwys 17L-35R, 17R-35L) <b>124.3 253.5</b> (Rwys 18L-36R, 18R-36L)	GND CON (East) <b>126.4</b> (West) <b>121.8</b>	CLNC DEL <b>134.7</b> <b>341.7</b>	CPDLC
---	---------------------------------------	--	--	---------------------------------------	-------



ELEV <b>96</b>	<b>D</b>	TDZE <b>88</b>
----------------	----------	----------------



HIRL all Rwys  
REIL Rwy 36L  
TDZ/CL Rwys 17L/R, 18R,  
35L/R and 36R



CATEGORY	A	B	C	D
----------	---	---	---	---

S-ILS 35R RA 164/14 150 DA 238

**SA CATEGORY I ILS - SPECIAL AIRCREW & AIRCRAFT CERTIFICATION REQUIRED**

SE-3, 26 DEC 2024 to 23 JAN 2025

SE-3, 26 DEC 2024 to 23 JAN 2025