

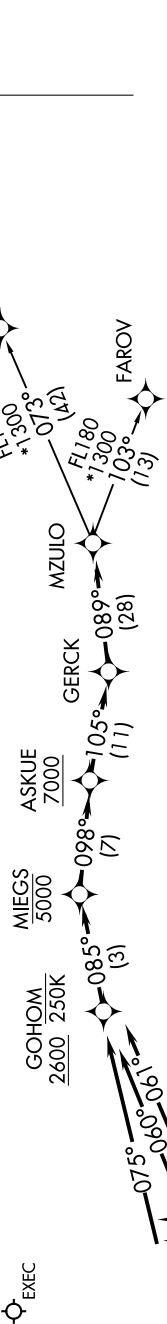
# MZULO THREE DEPARTURE (RNAV)

SE-3, 26 DEC 2024 to 23 JAN 2025

**TOP ALTITUDE:**  
7000

RNAV 1 - DME/DME/IRU or GPS.  
RADAR required.

- D-ATIS DEP 120.525
- CLNC DEL 120.525
- 134.7 341.7
- CPDLC
- GND CON
- 126.4 (East)
- 121.8 (West)
- ORLANDO INTL TOWER
- 118.45 253.5
- (Rwys 17L-35R, 17R-35L)
- 124.3 253.5
- (Rwys 18L-36R, 18R-36L)
- ORLANDO DEP CON
- 124.8 307.0



**TAKEOFF MINIMUMS**  
Rwys 17L/R, 18L/R, 35L/R, 36L/R:  
Standard with minimum climb of 500' per NM to 600.

NOTE: Jet aircraft only.

NOTE: Chart not to scale.

# MZULO THREE DEPARTURE (RNAV)

(MZULO3.MZULO) 19MAY22

ORLANDO, FLORIDA  
ORLANDO INTL (MCO)

(NARRATIVE ON FOLLOWING PAGE)

SE-3, 26 DEC 2024 to 23 JAN 2025