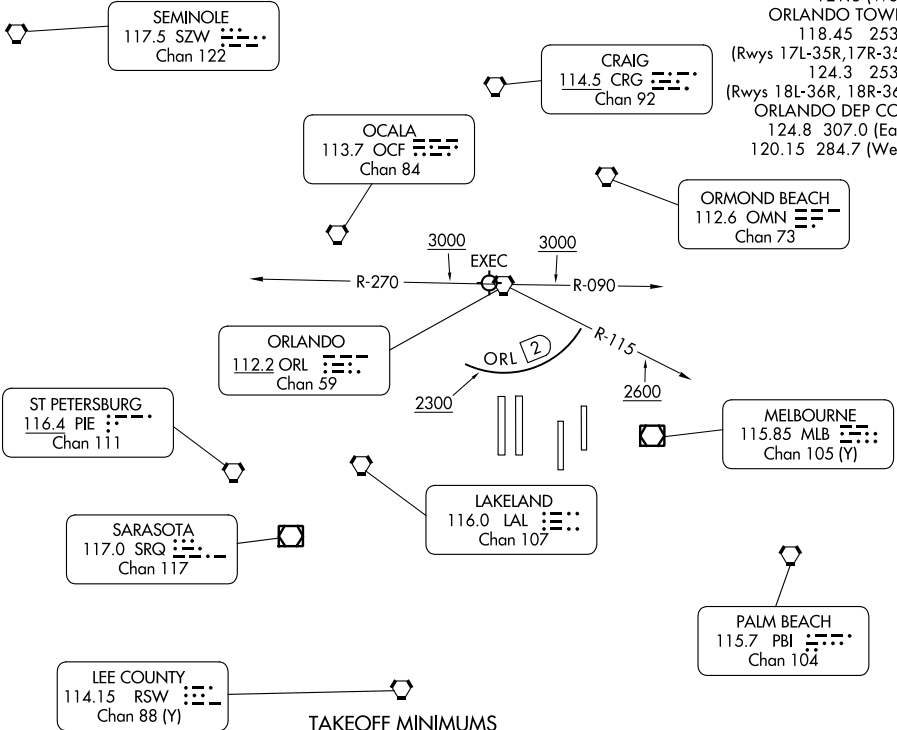


ORLANDO SIX DEPARTURE

**TOP ALTITUDE:
7000**

RADAR required - Takeoff rwys 35L/R, 36L/R: DME required.

D-ATIS DEP 120.525
 CLNC DEL 134.7 341.7
 CPDLC
 GND CON 126.4 (East)
 121.8 (West)
 ORLANDO TOWER 118.45 253.5
 (Rwys 17L-35R, 17R-35L) 124.3 253.5
 (Rwys 18L-36R, 18R-36L) ORLANDO DEP CON 124.8 307.0 (East)
 120.15 284.7 (West)



TAKEOFF MINIMUMS

Rwys 17L/R, 18L/R, 35L/R, 36L/R: Standard.

NOTE: Chart not to scale.

SE-3, 26 DEC 2024 to 23 JAN 2025

SE-3, 26 DEC 2024 to 23 JAN 2025



DEPARTURE ROUTE DESCRIPTION

TAKEOFF ALL RUNWAYS: Climb on assigned heading for RADAR vectors to assigned route. Maintain 7000. Expect filed altitude 10 minutes after departure.

ALL AIRCRAFT: ATC crossing restrictions and climb gradients: if unable to accept crossing restrictions and climb rates advise ATC prior to taxi.

Rwys 35L/R, 36L/R: Cross 2 DME south of ORL VORTAC at or above 2300, cross ORL VORTAC R-115 at or above 2600, cross ORL VORTAC R-090 or R-270 at or above 3000. Rwys 35L/R: 566' per NM to 3000, Rwy 36L: 637' per NM to 3000, Rwy 36R: 621' per NM to 3000.