

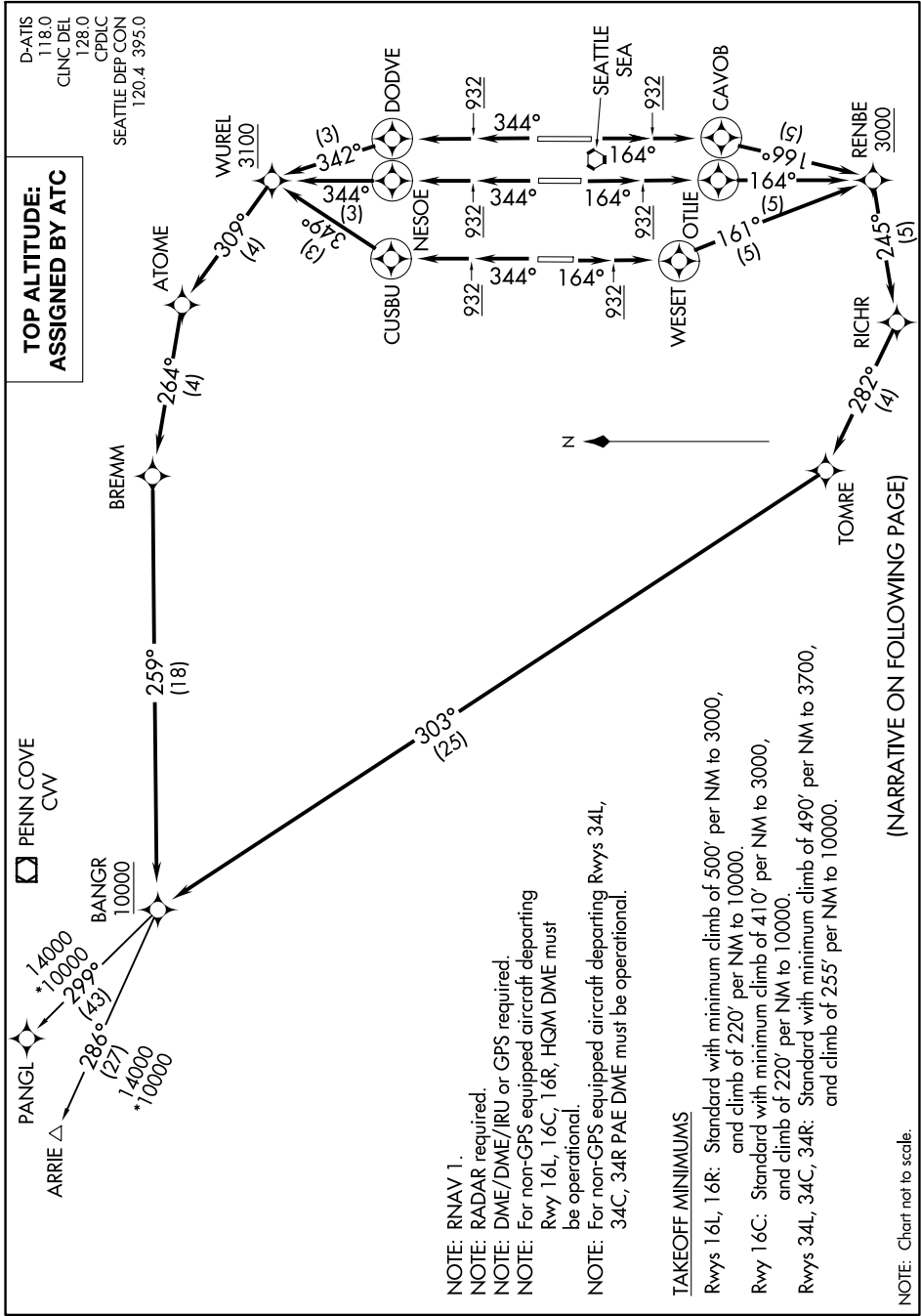
# BANGR NINE DEPARTURE (RNAV)

AL-582 (FAA)

SEATTLE-TACOMA INTL (SEA)  
SEATTLE, WASHINGTON

D-ATIS 118.0  
CLNC DEL 128.0  
CPDLC  
SEATTLE DEP CON 120.4 395.0

**TOP ALTITUDE:  
ASSIGNED BY ATC**



NW-1, 26 DEC 2024 to 23 JAN 2025

NW-1, 26 DEC 2024 to 23 JAN 2025

- NOTE: RNAV 1.
- NOTE: RADAR required.
- NOTE: DME/DME/IRU or GPS required.
- NOTE: For non-GPS equipped aircraft departing Rwy 16L, 16C, 16R, HGM DME must be operational.
- NOTE: For non-GPS equipped aircraft departing Rwys 34L, 34C, 34R PAE DME must be operational.

**TAKEOFF MINIMUMS**

Rwys 16L, 16R: Standard with minimum climb of 500' per NM to 3000, and climb of 220' per NM to 10000.

Rwy 16C: Standard with minimum climb of 410' per NM to 3000, and climb of 220' per NM to 10000.

Rwys 34L, 34C, 34R: Standard with minimum climb of 490' per NM to 3700, and climb of 255' per NM to 10000.

(NARRATIVE ON FOLLOWING PAGE)

NOTE: Chart not to scale.

# BANGR NINE DEPARTURE (RNAV)