

LOC/DME I-CJL 110.75 Chan 44 (Y)	APP CRS 164°	Rwy Idg TDZE Apt Elev	8500 415 432
---	------------------------	-----------------------------	---

ILS RWY 16R (SA CAT I)

SEATTLE-TACOMA INTL (SEA)

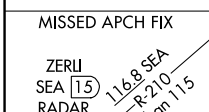
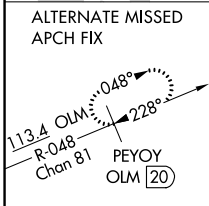
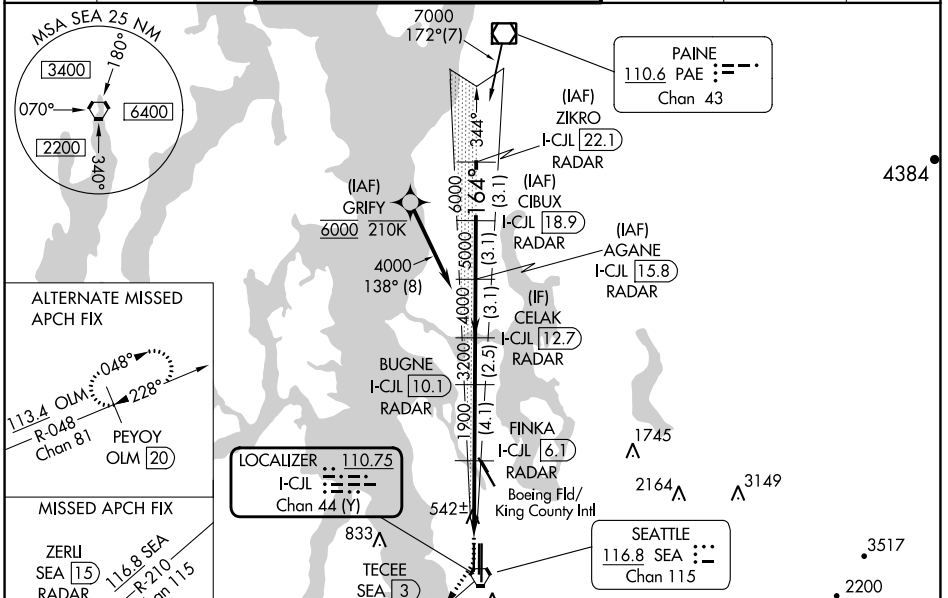
DME or RADAR required. From GRIFY: RNAV 1-GPS required.

Simultaneous approach authorized with Rwy 16L and 16C. Simultaneous operations require use of vertical guidance, maintain last assigned altitude until established on glideslope. Requires specific OPSPEC, MSPEC or LOA approval and use of HUD to DH.

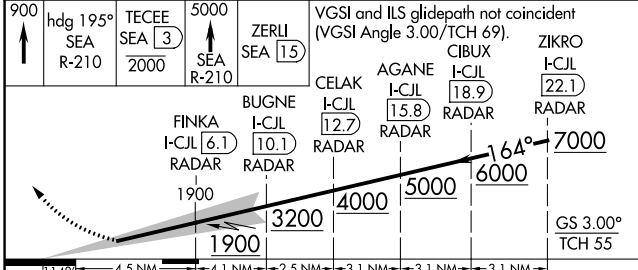


MISSED APPROACH: Climb to 900 then climb on heading 195° and on SEA VORTAC R-210 to cross TECEE/SEA 3 DME/RADAR at or below 2000 then climb to 5000 on SEA VORTAC R-210 to ZERLI/SEA 15 DME/RADAR and hold, continue climb-in-hold to 5000.

D-ATIS 118.0	SEATTLE APP CON 133.65 273.45	SEATTLE TOWER 119.9 239.3 (Rwys 16L, 16C, 34C, 34R) 120.95 239.3 (Rwys 16R, 34L)	GND CON 121.7	CLNC DEL 128.0	CPDLC
------------------------	---	--	-------------------------	--------------------------	-------



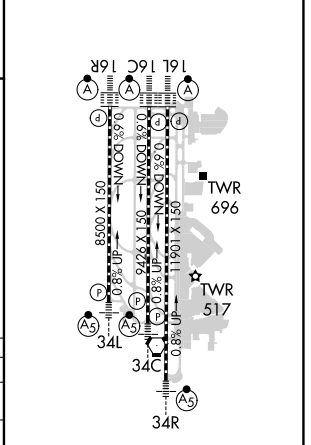
900	hdg 195° SEA R-210	TECEE SEA 3 2000	5000 SEA R-210	ZERLI SEA 15	VGSI and ILS glidepath not coincident (VGSI Angle 3.00/TCH 69).
-----	--------------------	------------------	----------------	--------------	---



CATEGORY	A	B	C	D
----------	---	---	---	---

S-ILS 16R	RA 176/14 150 DA 565			
-----------	----------------------	--	--	--

ELEV 432	TDZE 415
----------	----------



SA CAT I ILS-SPECIAL AIRCREW & AIRCRAFT CERTIFICATION REQUIRED

HIRL all Rwys
TDZ/CL Rwys 16L, 16C, 16R and 34R

NW-1, 26 DEC 2024 to 23 JAN 2025

NW-1, 26 DEC 2024 to 23 JAN 2025