

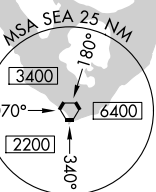
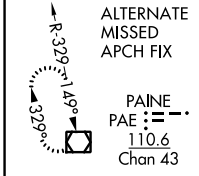
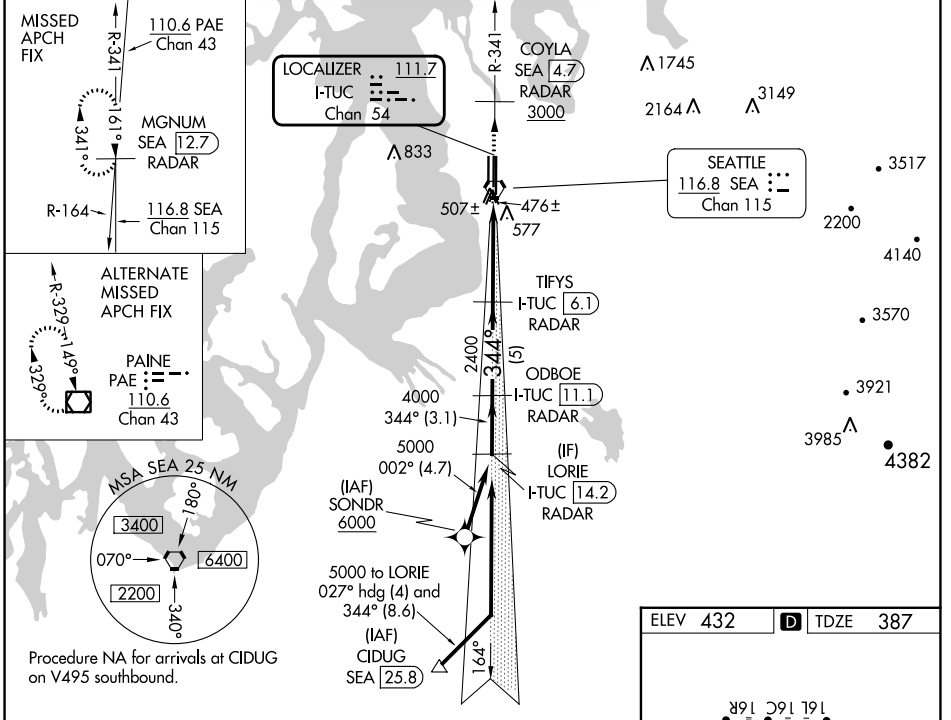
LOC/DME I-TUC 111.7 Chan 54	APP CRS 344°	Rwy ldg TDZE 387 Apt Elev 432
---	------------------------	--

ILS RWY 34C (SA CAT I & II)

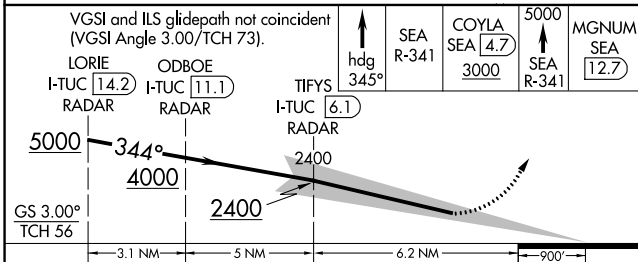
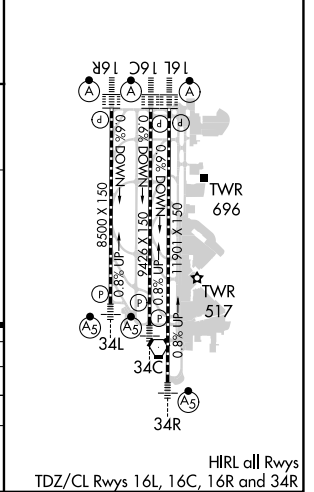
SEATTLE-TACOMA INTL (SEA)

DME or RADAR required. From SONDR: RNAV 1-GPS required.	MALSR As	MISSED APPROACH: Climb on heading 345° and outbound on SEA VORTAC R-341 to cross COYLA/SEA 4.7 DME/RADAR at or above 3000 then climb to 5000 on SEA VORTAC R-341 to MGNUM/SEA 12.7 DME/RADAR and hold, continue climb-in-hold to 5000.
---	-------------	--

D-ATIS 118.0	SEATTLE APP CON 133.65 273.45	SEATTLE TOWER 119.9 239.3 (Rwys 16L, 16C, 34C, 34R) 120.95 239.3 (Rwys 16R, 34L)	GND CON 121.7	CLNC DEL 128.0	CPDLC
------------------------	---	--	-------------------------	--------------------------	-------



ELEV 432	TDZE 387
----------	----------



CATEGORY	A	B	C	D
S-ILS 34C	SA CAT I	RA 231/14	150	DA 537
S-ILS 34C	SA CAT II	RA 112/12	100	DA 487

SA CATEGORY I & II ILS - SPECIAL AIRCREW & AIRCRAFT CERTIFICATION REQUIRED

NW-1, 26 DEC 2024 to 23 JAN 2025

NW-1, 26 DEC 2024 to 23 JAN 2025