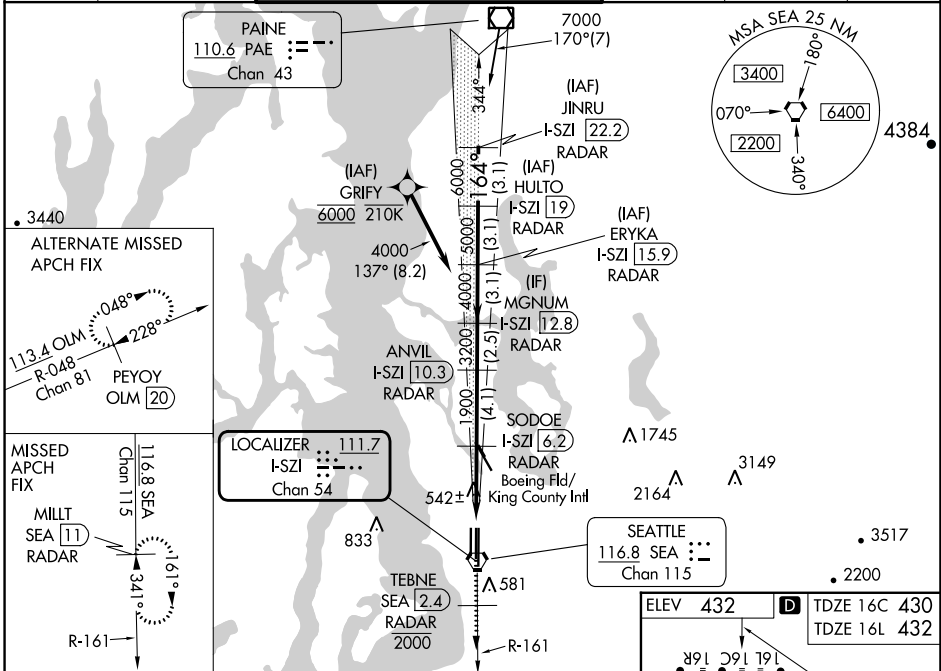


LOC/DME I-SZI 111.7 Chan 54	APP CRS 164°	Rwy Idg 9426 11901 TDZE 430 432 Apt Elev 432 432
---	------------------------	--

ILS or LOC RWY 16C

SEATTLE-TACOMA INTL (SEA)

DME or RADAR required. From GRIFY: RNAV 1-GPS required.		ALSF-2 Rwy 16C/L		MISSED APPROACH: Climb on heading 160° and SEA VORTAC R-161 to cross TEBNE/SEA 2.4 DME/RADAR at or below 2000, then climb to 5000 on SEA VORTAC R-161 to MILLT/SEA 11 DME/RADAR and hold, continue climb-in-hold to 5000.	
▼ Inop table does not apply to Sidstep 16L Cats A/B. Simultaneous approach authorized with Rwy 16R. Simultaneous operations require use of vertical guidance, maintain last assigned altitude until established on glideslope. For inop ALS, increase S-LOC 16C Cat C, D visibility to RVR 5500. See additional requirements on adjacent information page.		SEATTLE TOWER 119.9 239.3 (Rwys 16L, 16C, 34C, 34R) 120.95 239.3 (Rwys 16R, 34L)		GND CON 121.7	CLNC DEL 128.0
D-ATIS 118.0	SEATTLE APP CON 133.65 273.45			CPDLC	



NW-1, 26 DEC 2024 to 23 JAN 2025

NW-1, 26 DEC 2024 to 23 JAN 2025

SEA R-161 hdg 160°	TEBNE SEA 2.4 2000	5000 SEA R-161	VGSI and ILS glidepath not coincident (VGSI Angle 3.00/TCH 71).					
*LOC only		MILLT SEA 11	SODOE I-SZI 6.2 RADAR	ANVIL I-SZI 10.3 RADAR	MGNM I-SZI 12.8 RADAR	ERYKA I-SZI 15.9 RADAR	HULTO I-SZI 19 RADAR	JINRU I-SZI 22.2 RADAR
I-SZI 1.7	I-SZI 2.7	1900	3200	4000	5000	6000	7000	7000
0.9	3.5 NM	4.1 NM	2.5 NM	3.1 NM	3.1 NM	3.1 NM		
CATEGORY	A		B		C		D	
S-ILS 16C	630/18		200 (200-½)					
S-LOC 16C	800/24	370 (400-½)	800/35		370 (400-¾)			
SIDESTEP 16L	800/55 368 (400-1)				800-1½ 368 (400-1½)			
Ⓢ CIRCLING	1000-1	568 (600-1)	1000-1½ 568 (600-1½)		1000-2 568 (600-2)			

