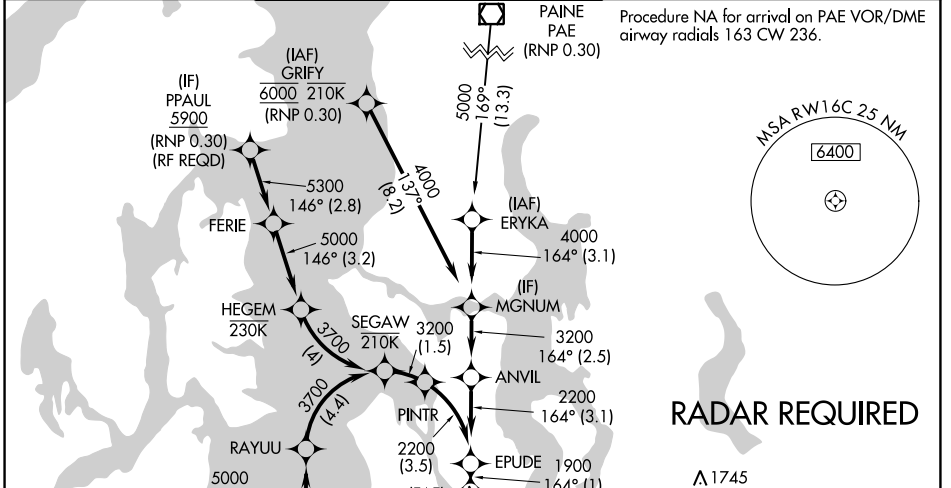


| | | |
|-------------|----------|-------------|
| APP CRS | Rwy Idg | 9426 |
| 164° | TDZE | 430 |
| | Apt Elev | 433 |

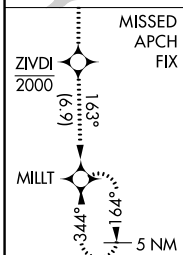
RNAV (RNP) Z RWY 16C

SEATTLE-TACOMA INTL (SEA)

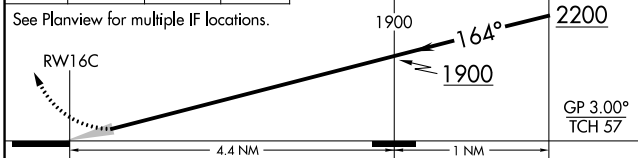
| | | | | | |
|---|--|--|--------------------------------|---|--------------|
| ▽ For uncompensated Baro-VNAV systems, procedure NA below -6°C (22°F) or above 54°C (130°F). GPS required. See additional requirements on adjacent information page. For inop ALS, increase RNP 0.12 all Cats visibility to RVR 5200, and increase RNP 0.30 all Cats visibility to 1 3/8 SM. | SEATTLE TOWER (Rwys 16L, 16C, 34C, 34R) 119.9 239.3 120.95 239.3 (Rwys 16R, 34L) | | ALSF-2 | MISSED APPROACH: Climb direct ZIVDI to cross ZIVDI at or below 2000, then climb to 5000 on track 163° to MILLT and hold, continue climb-in-hold to 5000. | |
| | D-ATIS 118.0 | SEATTLE APP CON 133.65 273.45 | GND CON 121.7 | CLNC DEL 128.0 | CPDLC |



RADAR REQUIRED

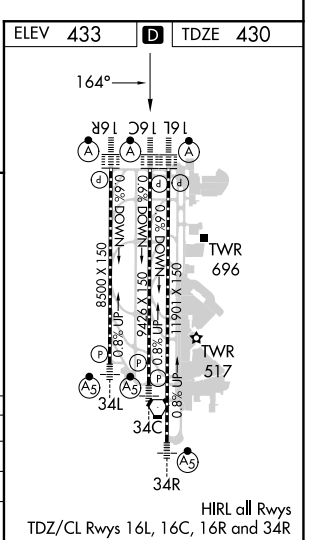


| | | | |
|-------------------|---------------------|-----------|--|
| ZIVDI 2000 | 5000 tr 163° | MILLT | VGSI and RNAV glidepath not coincident (VGSI Angle 3.00/TCH 71). |
|-------------------|---------------------|-----------|--|



| | | | | |
|-------------|---|--------|-------------|---|
| CATEGORY | A | B | C | D |
| RNP 0.12 DA | | 758/29 | 328 (400-%) | |
| RNP 0.30 DA | | 834/43 | 404 (500-%) | |

AUTHORIZATION REQUIRED



NW-1, 26 DEC 2024 to 23 JAN 2025

NW-1, 26 DEC 2024 to 23 JAN 2025

HIRL all Rwys
TDZ/CL Rwys 16L, 16C, 16R and 34R