

LOC I-ILN <b>110.7</b>	APP CRS <b>224°</b>	Rwy Idg <b>10701</b> TDZE <b>1077</b> Apt Elev <b>1077</b>
---------------------------	------------------------	--

# ILS RWY 22R (CAT II & III)

WILMINGTON AIR PARK (ILN)

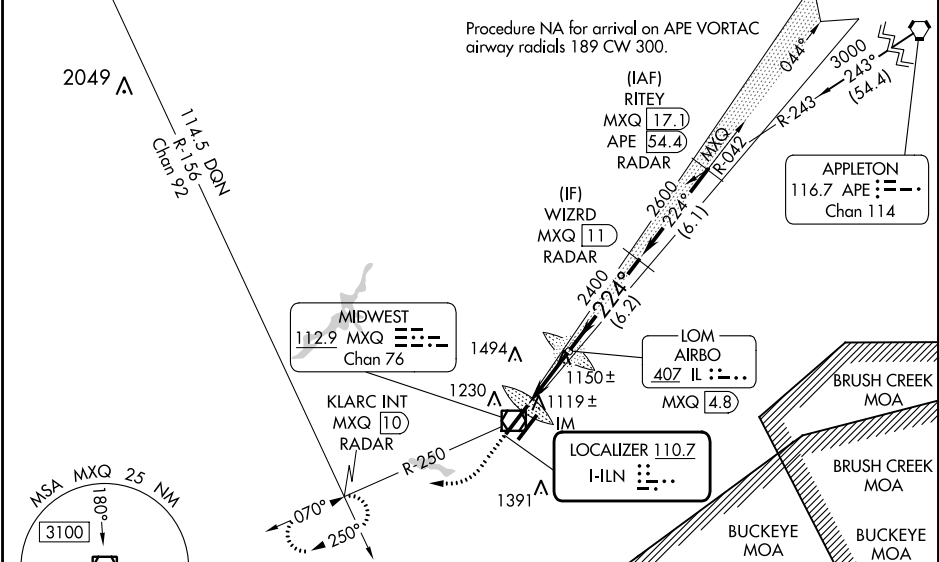
DME or RADAR required for procedure entry.

Simultaneous approach authorized.  
 DME from MXQ VOR/DME.  
 DME use requires simultaneous reception of I-ILN and MXQ DME.

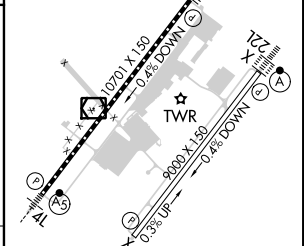
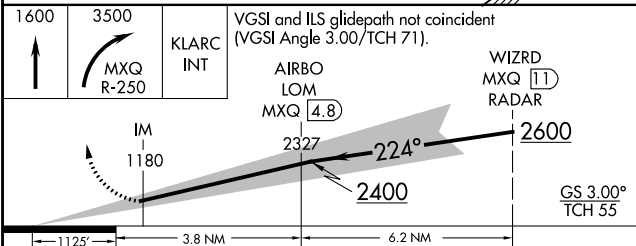
ALSF-2

MISSED APPROACH: Climb to 1600 then climbing right turn to 3500 on MXQ VOR/DME R-250 to KLARC INT/MXQ 10 DME/RADAR and hold, continue climb-in-hold to 3500.

D-ATIS <b>124.925</b>	COLUMBUS APP CON <b>118.85 269.275</b>	WILMINGTON TOWER <b>119.475</b>	GND CON <b>121.6</b>	CLNC DEL <b>128.85</b>
--------------------------	---	------------------------------------	-------------------------	---------------------------



ELEV 1077	<b>D</b>	TDZE 1077
-----------	----------	-----------



CATEGORY	A	B	C	D
S-ILS 22R	CAT II RA 106/12 100 DA 1177			
S-ILS 22R	CAT III RVR 06			

**CATEGORY II & III ILS - SPECIAL AIRCREW & AIRCRAFT CERTIFICATION REQUIRED**

TDZ/CL Rwy's 22L and 22R  
HIRL Rwy's 4L-22R and 4R-22L

EC-2, 26 DEC 2024 to 23 JAN 2025

EC-2, 26 DEC 2024 to 23 JAN 2025