

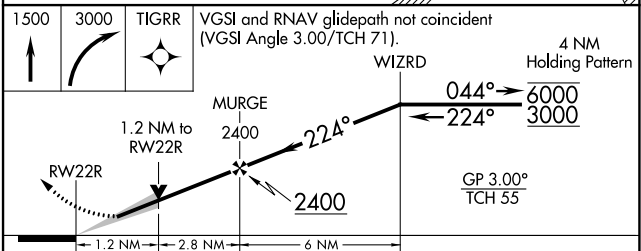
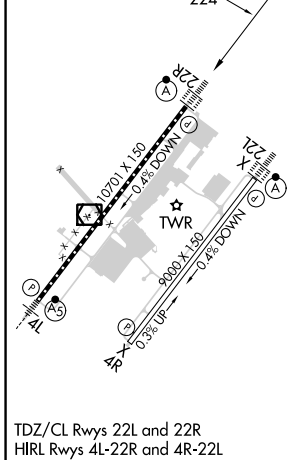
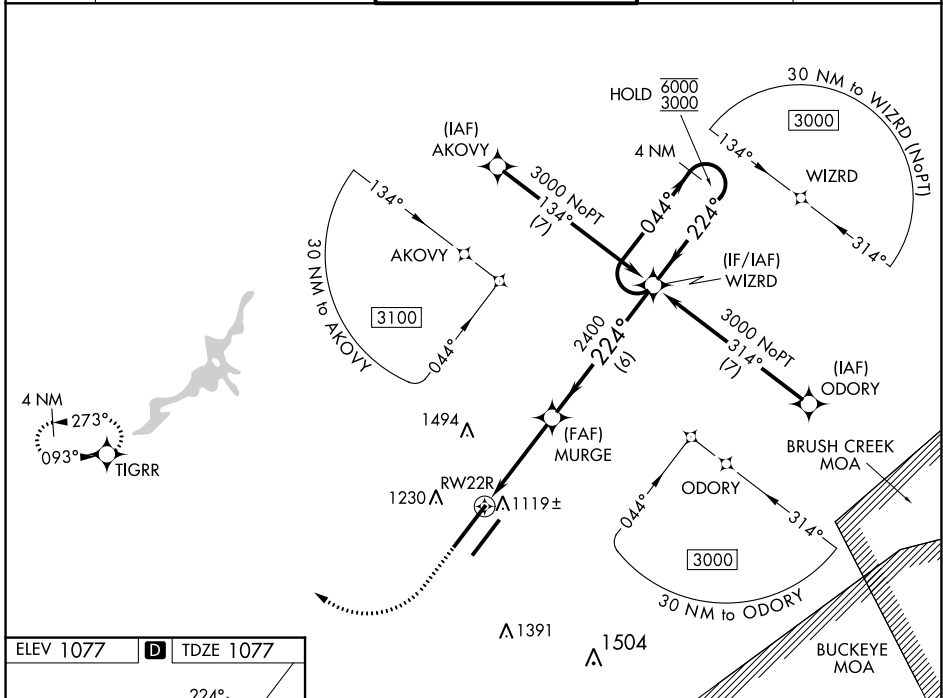
WAAS CH <b>40214</b> <b>W22A</b>	APP CRS <b>224°</b>	Rwy Idg TDZE <b>10701</b> <b>1077</b> Apt Elev <b>1077</b>
--	------------------------	---

# RNAV (GPS) RWY 22R

WILMINGTON AIR PARK (ILN)

RNP APCH - GPS.	ALSF-2	MISSED APPROACH: Climb to 1500 then right turn 3000 direct TIGRR and hold.
<p><b>⚠</b> For uncompensated Baro-VNAV systems, LNAV/VNAV NA below -19°C or above 54°C. For inop ALS, increase LNAV/VNAV all Cats visibility to RVR 4500.</p>		<p><b>A</b></p>

D-ATIS <b>124.925</b>	COLUMBUS APP CON <b>118.85 269.275</b>	WILMINGTON TOWER <b>119.475</b>	GND CON <b>121.6</b>	CLNC DEL <b>128.85</b>
--------------------------	---	------------------------------------	-------------------------	---------------------------



CATEGORY	A	B	C	D
LPV DA		1277/18	200 (200-½)	
LNAV/VNAV DA		1393/24	316 (400-½)	
LNAV MDA	1520/24	443 (500-½)	1520/45	443 (500-¾)
<b>C</b> CIRCLING	1560-1	483 (500-1)	1860-2¼ 783 (800-2¼)	1860-2½ 783 (800-2½)

EC-2, 26 DEC 2024 to 23 JAN 2025

EC-2, 26 DEC 2024 to 23 JAN 2025