

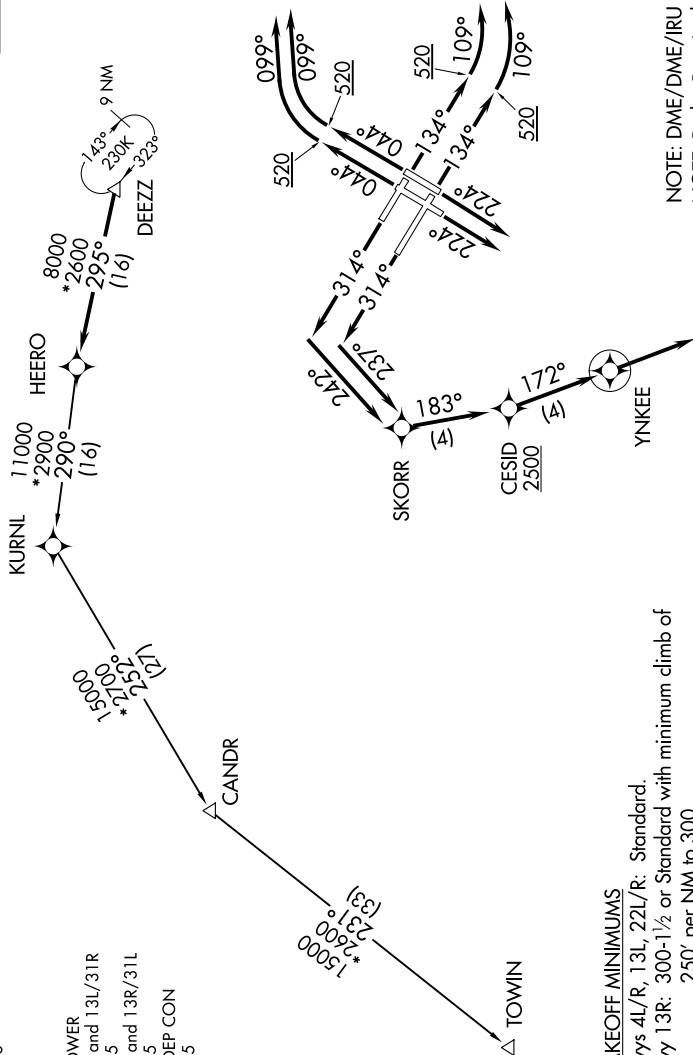
(DEZZ5.DEZZ) 18200

AL-610 (FAA)

JOHN F KENNEDY INTL (JFK)
NEW YORK, NEW YORK

DEZZ FIVE DEPARTURE (RNAV)

TOP ALTITUDE:
5000



NOTE: DME/DME/IRU or GPS required.
 NOTE: Radar Required.
 NOTE: RNAV 1.
 NOTE: TOWIN transition ATC assigned only.

NOTE: Chart not to scale.

TAKEOFF MINIMUMS
 Rwy 4L/R, 13L, 22L/R: Standard.
 Rwy 13R: 300-1/2 or Standard with minimum climb of 250' per NM to 300.
 Rwy 31L/R: Standard with minimum climb of 500' per NM to 1400.

(NARRATIVE ON FOLLOWING PAGE)

NE-2, 26 DEC 2024 to 23 JAN 2025

NE-2, 26 DEC 2024 to 23 JAN 2025

DEZZ FIVE DEPARTURE (RNAV)

(DEZZ5.DEZZ) 19JUL18

NEW YORK, NEW YORK
JOHN F KENNEDY INTL (JFK)