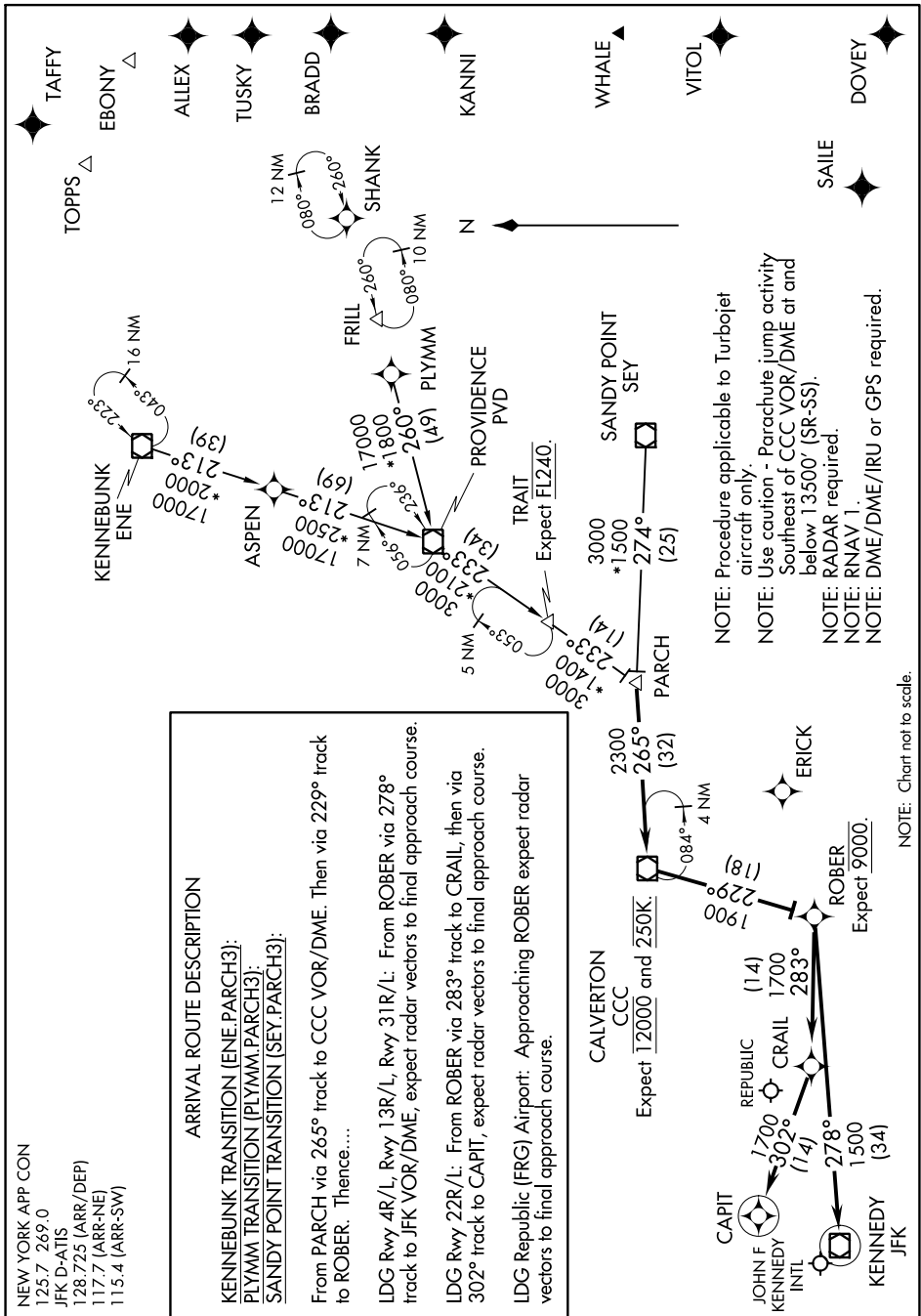


PARCH THREE ARRIVAL (RNAV)

NEW YORK, NEW YORK

NE-2, 26 DEC 2024 to 23 JAN 2025



NOTE: Chart not to scale.

NE-2, 26 DEC 2024 to 23 JAN 2025

PARCH THREE ARRIVAL (RNAV)

NEW YORK, NEW YORK