

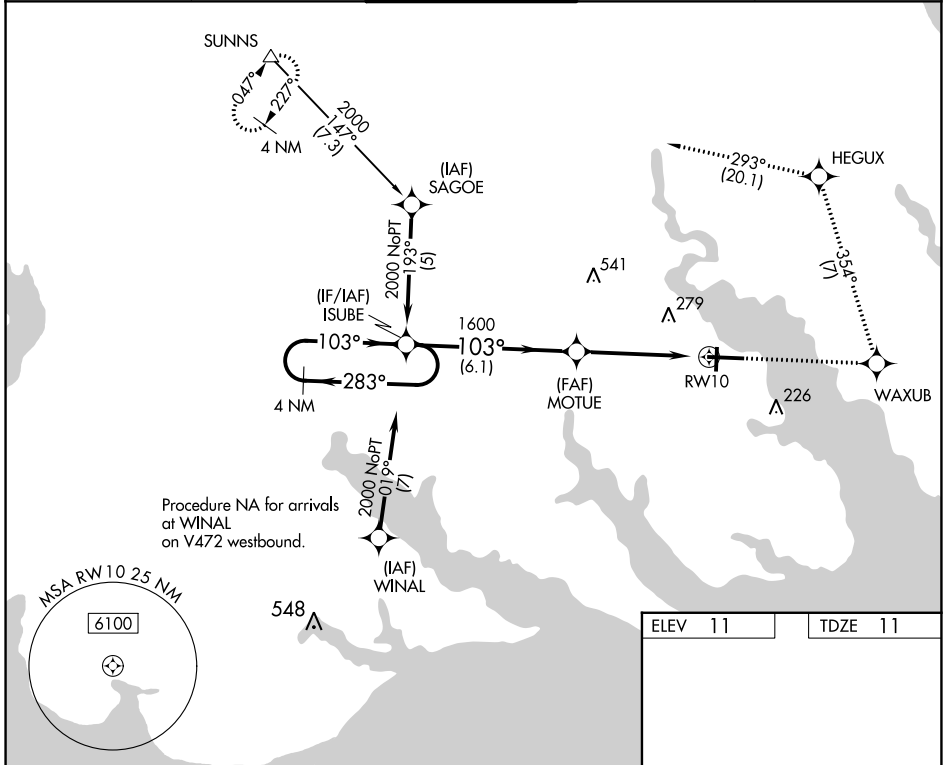
WAAS CH 65703 W10A	APP CRS 103°	Rwy Idg 7219 TDZE 11 Apt Elev 11
--	------------------------	---

RNAV (GPS) RWY 10

ELIZABETH CITY CG AIR STATION/RGNL (ECG)

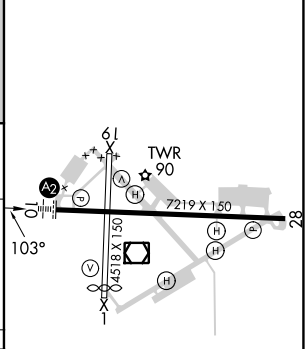
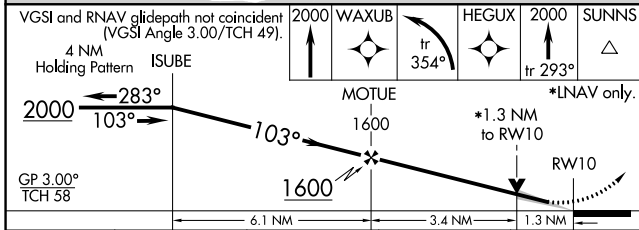
RNP APCH. ▼ Procedure NA when tethered balloon located approximately 2 miles southeast of airport is flying.	SALS A2	MISSED APPROACH: Climb to 2000 direct WAXUB and left turn on track 354° to HEGUX and 2000 on track 293° to SUNNS and hold.
---	------------	--

ASOS 124.375	NORFOLK APP CON 119.55 269.425	ELIZABETH CITY TOWER★ 120.5 (CTAF) 355.6	GND CON 121.9	UNICOM 122.95
------------------------	--	--	-------------------------	-------------------------



Procedure NA for arrivals at WINAL on V472 westbound.

ELEV 11	TDZE 11
---------	---------



CATEGORY	A	B	C	D
LPV DA	261-3/4		250 (300-3/4)	
LNAV MDA	460-1	449 (500-1)	460-1 3/8	449 (500-1 3/8)
CIRCLING	480-1	469 (500-1)	640-1 3/4 629 (700-1 3/4)	640-2 629 (700-2)

MIRL Rwy 1-19
HIRL Rwy 10-28
REIL Rws 10 and 28

SE-2, 26 DEC 2024 to 23 JAN 2025

SE-2, 26 DEC 2024 to 23 JAN 2025