

VOR/DME ECG 115.75 Chan 104 (Y)	APP CRS 184°	Rwy Idg 4518 TDZE 11 Apt Elev 11
---	------------------------	---

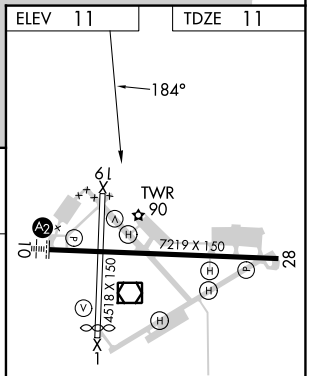
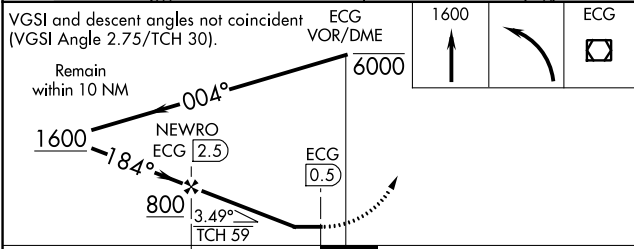
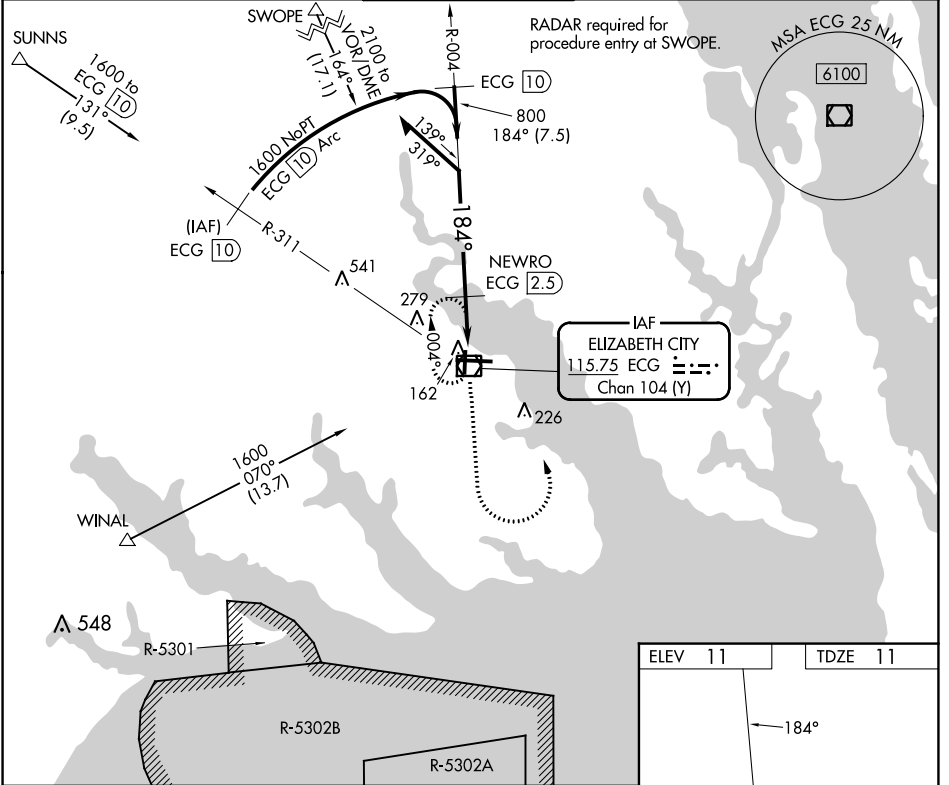
VOR/DME RWY 19

ELIZABETH CITY CG AIR STATION/RGNL (ECG)

Procedure NA when tethered balloon located approximately 2 miles southeast of airport is flying. When local altimeter setting not received, use Currituck altimeter setting and increase all MDAs 40 feet.

MISSED APPROACH: Climb to 1600 then left turn direct ECG VOR/DME and hold.

ASOS 124.375	NORFOLK APP CON 119.55 269.425	ELIZABETH CITY TOWER* 120.5 (CTAF) 355.6	GND CON 121.9	UNICOM 122.95
------------------------	--	---	-------------------------	-------------------------



CATEGORY	A	B	C	D
S-19	480-1 469 (500-1)		480-1 469 (500-1 3/8)	480-1 469 (500-1 1/2)
CIRCLING	480-1 469 (500-1)		640-1 629 (700-1 3/4)	640-2 629 (700-2)

MIRL Rwy 1-19
HIRL Rwy 10-28
REIL Rws 10 and 28

SE-2, 26 DEC 2024 to 23 JAN 2025

SE-2, 26 DEC 2024 to 23 JAN 2025