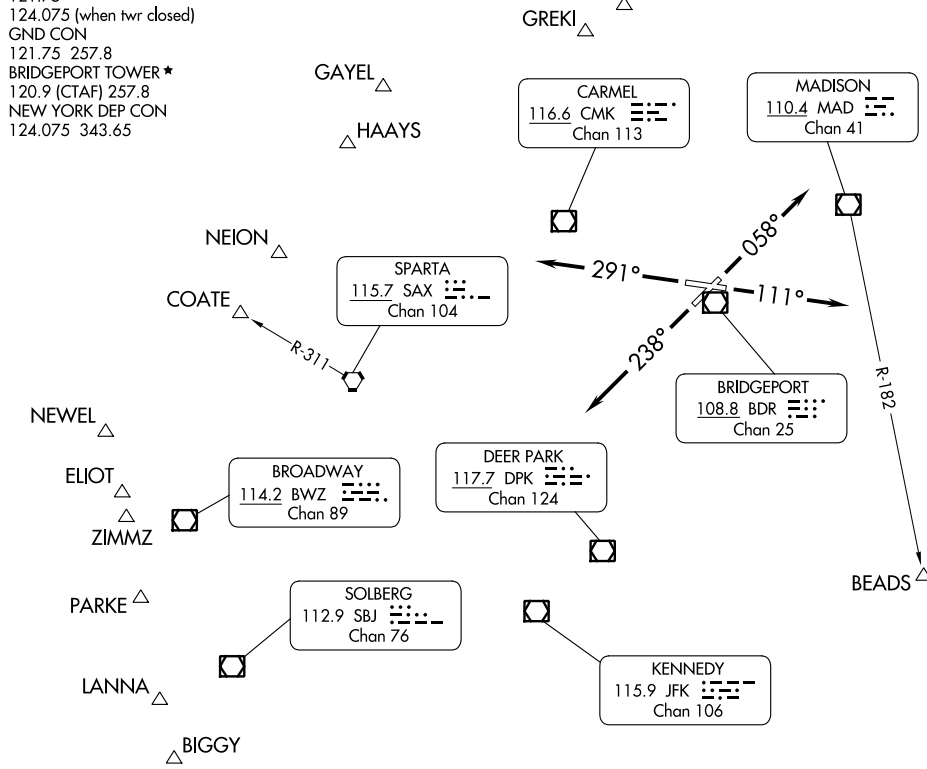


BRIDGEHAVEN ONE DEPARTURE

AL-621 (FAA)

BRIDGEPORT, CONNECTICUT

| | | |
|--|-------------------------------|------------------------|
| ATIS 119.15 CLNC DEL 121.75 124.075 (when twr closed) GND CON 121.75 257.8 BRIDGEPORT TOWER ★ 120.9 (CTAF) 257.8 NEW YORK DEP CON 124.075 343.65 | TOP ALTITUDE: 2000 | RADAR required. |
|--|-------------------------------|------------------------|



TAKEOFF MINIMUMS:
 Rwy 6, 11, 24: Standard.
 Rwy 29: 600-2³/₄ or standard with minimum climb of 300' per NM to 700.

- NOTE: BEADS Departures expect vectors to MAD R-182. NOTE: Chart not to scale.
 NOTE: COATE Departures expect vectors to SAX/SAX R-311.
 NOTE: ELIOT authorized for all aircraft types but restricted to a final altitude of 14000 or 16000.
 NOTE: NEWEL authorized only for jet aircraft requesting a final altitude of FL180 and above.
 NOTE: ZIMMZ authorized for all aircraft types but restricted to a final altitude of FL180 and above.

DEPARTURE ROUTE DESCRIPTION

TAKEOFF RUNWAY 6: Climb heading 058°, thence. . .
TAKEOFF RUNWAY 11: Climb heading 111°, thence. . .
TAKEOFF RUNWAY 24: Climb heading 238°, thence. . .
TAKEOFF RUNWAY 29: Climb heading 291°, thence. . .
 . . . expect vectors to assigned route/fix. Maintain 2000. Expect clearance to filed altitude/flight level within ten (10) minutes after departure.

NE-1, 26 DEC 2024 to 23 JAN 2025

NE-1, 26 DEC 2024 to 23 JAN 2025