

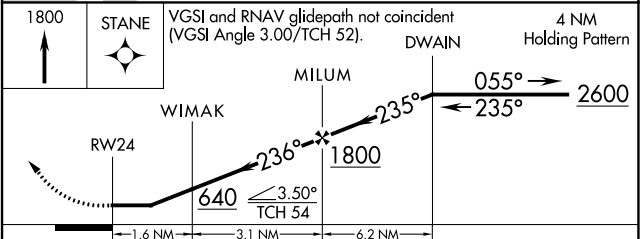
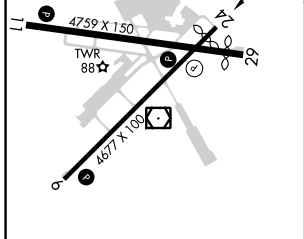
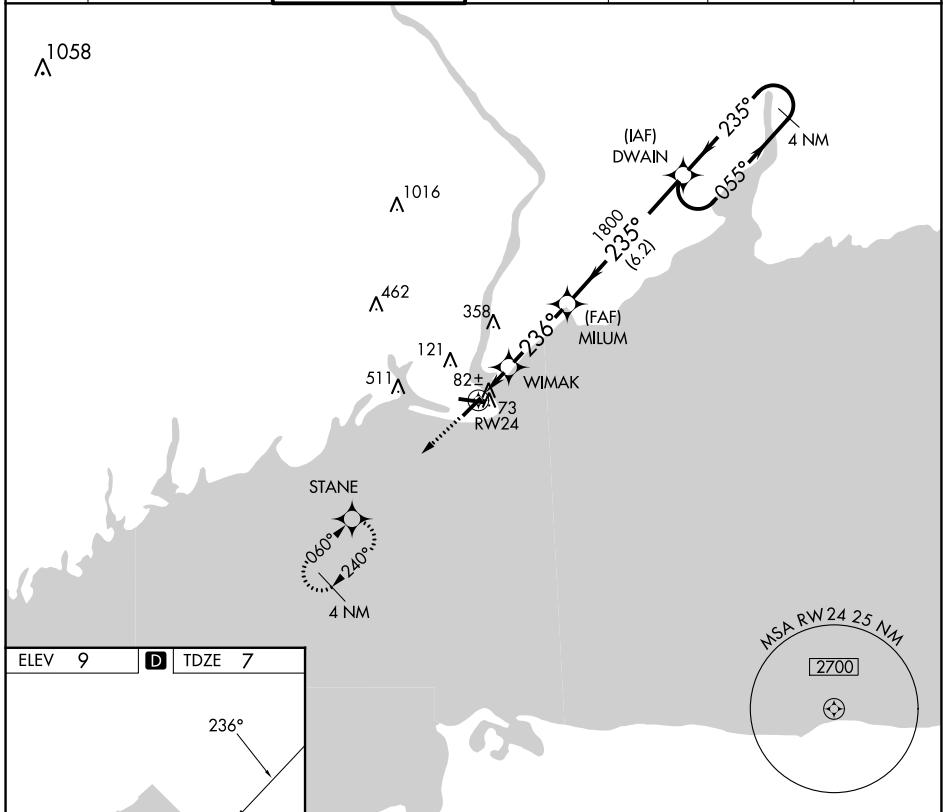
APP CRS 236°	Rwy Idg TDZE Apt Elev	4357 7 9
------------------------	-----------------------------	-------------------------------------

RNAV (GPS) RWY 24

BRIDGEPORT/SIKORSKY (BDR)

RNP APCH - GPS.		MISSED APPROACH: Climb to 1800 direct STANE and hold.	
Rwy 24 helicopter visibility reduction below 1 SM NA. Circling Rwy 11, 29 NA at night.			

ATIS 119.15	NEW YORK APP CON 124.075 343.65	BRIDGEPORT TOWER* 120.9 (CTAF) 257.8	GND CON 121.75 257.8	CLNC DEL 121.75	CLNC DEL 124.075 (When twr closed)	UNICOM 123.0
-----------------------	---	---	--------------------------------	---------------------------	---	------------------------



ELEV 9	D	TDZE 7				
REIL Rwy 6, 11, 24, and 29						
HIRL Rwy 6-24 and 11-29						
CIRCLING	480-1 471 (500-1)	620-1 611 (700-1)	820-2½ 811 (900-2½)	820-2¾ 811 (900-2¾)		

NE-1, 26 DEC 2024 to 23 JAN 2025

NE-1, 26 DEC 2024 to 23 JAN 2025