

(BAYPO2.BAYPO) 24137

AL-625 (FAA)

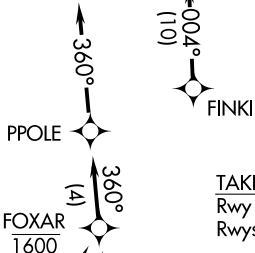
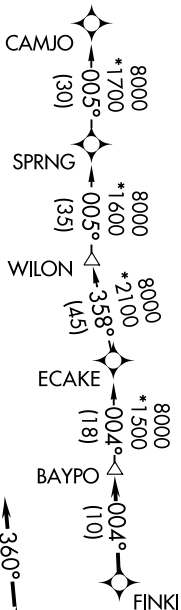
ST PETE-CLEARWATER INTL (PIE)  
ST PETERSBURG-CLEARWATER, FLORIDA

# BAYPO TWO DEPARTURE (RNAV)

TAMPA DEP CON  
125.3 316.05  
ATIS  
134.5  
CLNC DEL  
120.6 350.2  
GND CON  
121.9 348.6  
ST. PETERSBURG-CLEARWATER TOWER\*  
118.3 (CTAF) 257.8

**TOP ALTITUDE:  
1600**

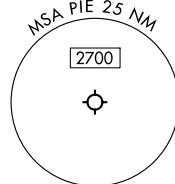
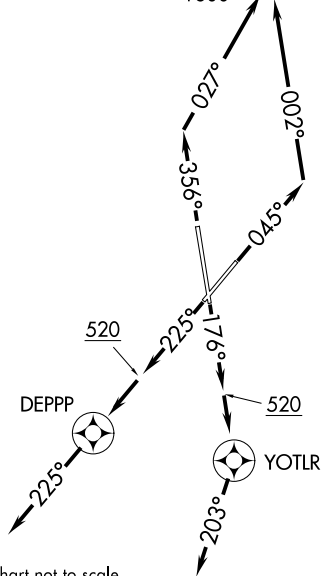
RNAV 1 - DME/DME/IRU or GPS required.  
RADAR required.



### TAKEOFF MINIMUMS

Rwy 18: Standard.  
Rwys 4, 36: Standard with minimum climb of 500'/NM to 520.  
Rwy 22: Standard with minimum climb of 230'/NM to 300.

NOTE: Jet aircraft only.  
NOTE: WILON Transition for use by aircraft filed to Jacksonville area airports only, or as assigned by ATC.



NOTE: Chart not to scale.

(CONTINUED ON FOLLOWING PAGE)

BAYPO TWO DEPARTURE (RNAV)  
(BAYPO2.BAYPO) 16MAY24

ST PETERSBURG-CLEARWATER, FLORIDA  
ST PETE-CLEARWATER INTL (PIE)

SE-3, 26 DEC 2024 to 23 JAN 2025

SE-3, 26 DEC 2024 to 23 JAN 2025