

(LLRGO1.LLRGO) 24137

AL-625 (FAA)

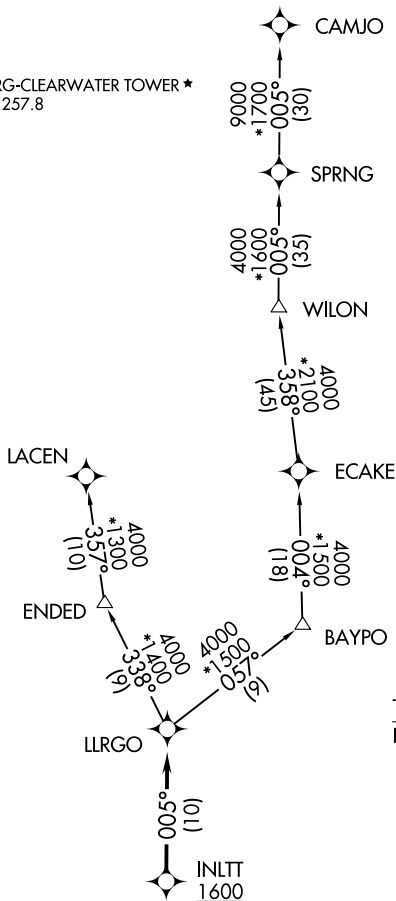
ST PETE-CLEARWATER INTL (PIE)  
ST PETERSBURG-CLEARWATER, FLORIDA

# LLRGO ONE DEPARTURE (RNAV)

TAMPA DEP CON  
125.3 316.05  
ATIS  
134.5  
CLNC DEL  
120.6 350.2  
GND CON  
121.9 348.6  
ST. PETERSBURG-CLEARWATER TOWER \*  
118.3 (CTAF) 257.8

RNAV 1 - DME/DME/IRU or GPS.  
RADAR required.

**TOP ALTITUDE:  
1600**

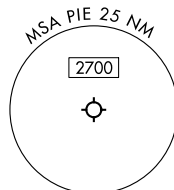
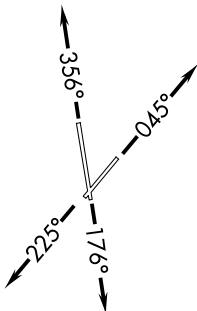


NOTE: For jets less than 60,000 lbs  
or as assigned by ATC.

### TAKEOFF MINIMUMS

Rwys 4, 18, 36: Standard.

Rwy 22: 300-1 $\frac{1}{8}$  or standard with  
minimum climb of 230'/NM  
to 300, or alternatively, with  
standard takeoff minimums  
and a normal 200'/NM climb  
gradient, takeoff must occur no  
later than 1700' prior to DER.



NOTE: Chart not to scale.

(CONTINUED ON FOLLOWING PAGE)

# LLRGO ONE DEPARTURE (RNAV)

(LLRGO1.LLRGO) 16MAY24

ST PETERSBURG-CLEARWATER, FLORIDA  
ST PETE-CLEARWATER INTL (PIE)

SE-3, 26 DEC 2024 to 23 JAN 2025

SE-3, 26 DEC 2024 to 23 JAN 2025