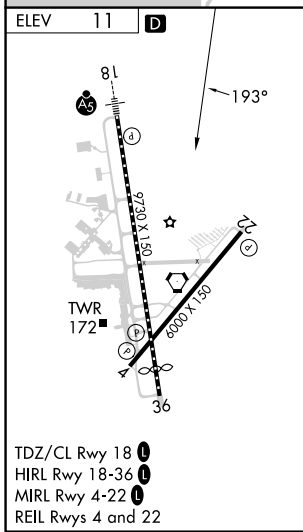
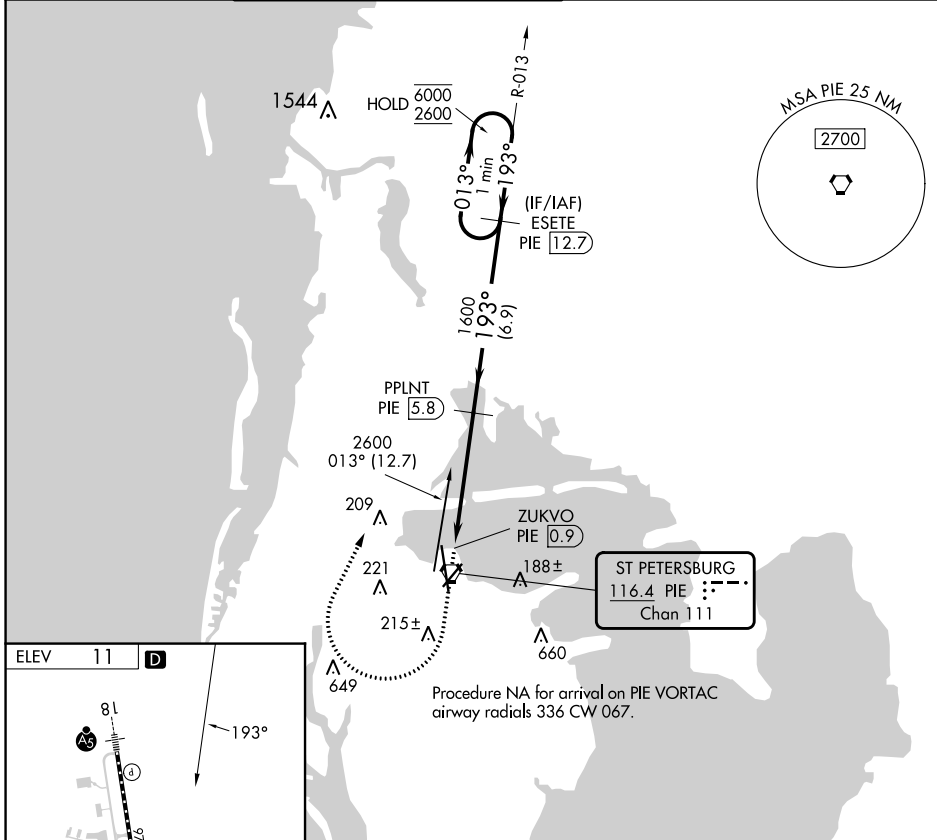


VORTAC PIE <b>116.4</b> Chan <b>111</b>	APP CRS <b>193°</b>	Rwy Idg TDZE Apt Elev	N/A N/A <b>11</b>
---	------------------------	-----------------------------	-------------------------

**VOR-B**

ST PETE-CLEARWATER INTL (PIE)

DME required.		MISSED APPROACH: Climb to 700 then climbing right turn to 2600 on heading 030° and PIE VORTAC R-013 to ESETE/PIE 12.7 DME and hold.			
ATIS <b>134.5</b>	TAMPA APP CON <b>125.3 316.05</b>	ST PETERSBURG-CLEARWATER TOWER ★ <b>118.3 (CTAF) 0 257.8</b>	GND CON <b>121.9 348.6</b>	CLNC DEL <b>120.6 350.2</b>	UNICOM <b>122.95</b>



700	2600	PIE R-013	ESETE PIE 12.7	ESETE PIE 12.7	One Minute Holding Pattern
hdg 030°					
		PPLNT PIE 5.8		013° → 6000	← 193° 2600
		ZUKVO PIE 0.9			
		PIE VORTAC			
		4.9 NM	6.9 NM		
1600					
CATEGORY	A	B	C	D	
<b>C</b> CIRCLING	520-1	509 (600-1)	600-1½ 589 (600-1½)	620-2 609 (700-2)	

SE-3, 26 DEC 2024 to 23 JAN 2025

SE-3, 26 DEC 2024 to 23 JAN 2025