

LOC/DME I-ULJ 111.15 Chan 48(Y)	APP CRS 293°	Rwy Idg 7011 TDZE 128 Apt Elev 132
--	------------------------	---

ILS or LOC RWY 29

LAURENCE G HANSCOM FLD (BED)

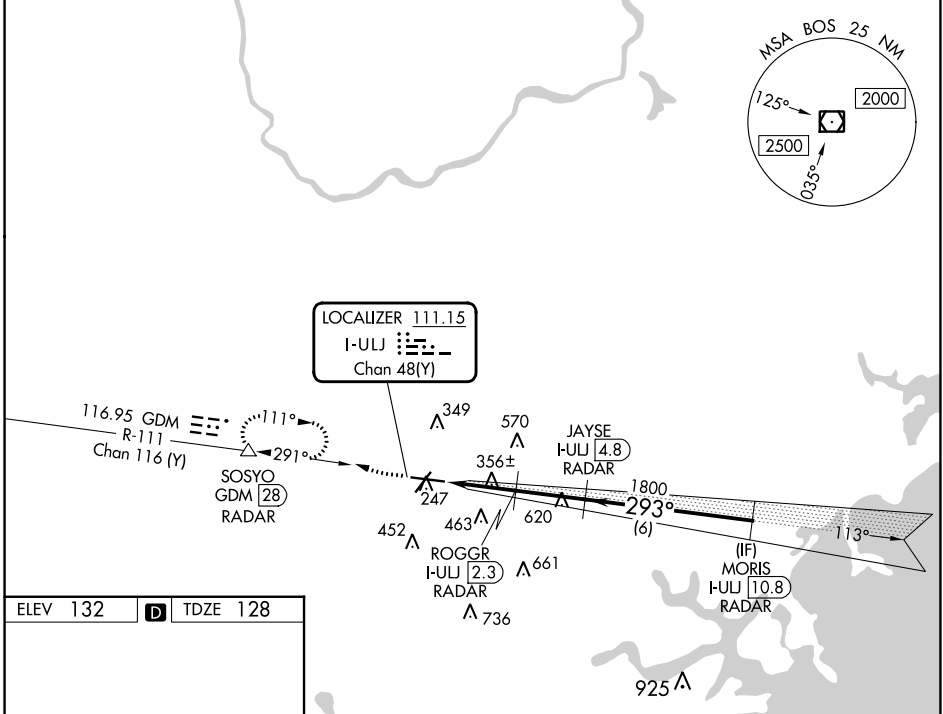
RADAR required for procedure entry. DME or RADAR required.

For inop ALS, increase S-LOC 29 Cats C and D to 1½ SM.

MALS R

MISSED APPROACH: Climb to 1000 then climbing right turn to 2000 on GDM VOR/DME R-111 to SOSYO/GDM 28 DME/RADAR and hold.

ATIS 124.6	BOSTON APP CON 124.4 279.6	HANSCOM TOWER ★ 118.5 (CTAF) 0 257.2	GND CON 121.7	CLNC DEL 121.85	UNICOM 122.95
----------------------	--------------------------------------	--	-------------------------	---------------------------	-------------------------



ELEV 132	D	TDZE 128
----------	---	----------

MIRL Rwy 5-23 (1)
HIRL Rwy 11-29 (1)
REIL Rwys 5 and 23 (1)

FAF to MAP 5.1 NM

Knots	60	90	120	150	180
Min:Sec	5:06	3:24	2:33	2:02	1:42

	1000	2000	SOSYO	JAYSE I-ULJ 4.8	MORIS I-ULJ 10.8
	GDM R-111	△		RADAR	RADAR
*LOC only.	I-ULJ DME ANTENNA	I-ULJ 1.1	ROGGR I-ULJ 2.3	1800	1800
	I-ULJ 0.3		RADAR	← 293° →	← 1800 →
				1000*	GS 3.00° TCH 55
	1.4 NM	1.2 NM	2.5 NM	6 NM	
CATEGORY	A		B		C
S-ILS 29			328-½		200 (200-½)
S-LOC 29	620-½ 492 (500-½)		620-1 492 (500-1)		
CIRCLING	720-1 588 (600-1)		880-2¼ 748 (800-2¼)		920-2½ 788 (800-2½)

NE-1, 26 DEC 2024 to 23 JAN 2025

NE-1, 26 DEC 2024 to 23 JAN 2025