

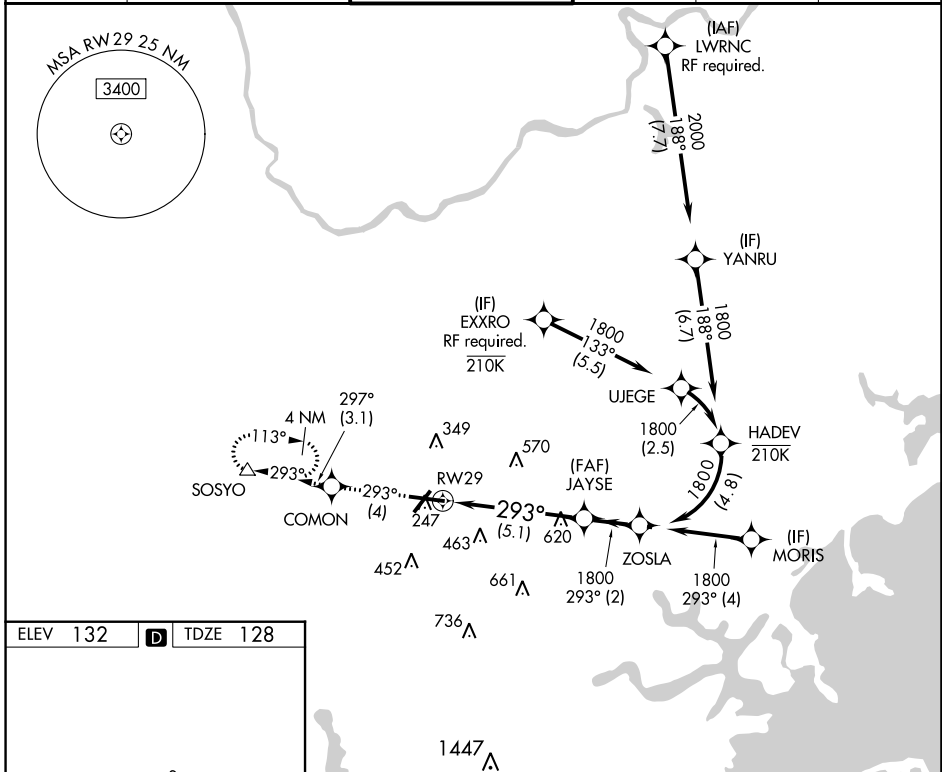
APP CRS	Rwy Idg	<b>7011</b>
<b>293°</b>	TDZE	<b>128</b>
	Apt Elev	<b>132</b>

# RNAV (RNP) Y RWY 29

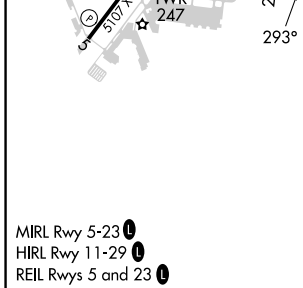
LAURENCE G HANSCOM FLD (BED)

RNP AR APCH.		MALSR	MISSED APPROACH: Climb to 2000 on track 293° to COMON then on track 297° to SOSYO and hold.		
For uncompensated Baro-VNAV systems, procedure NA below -19°C or above 54°C.					

ATIS	BOSTON APP CON	HANSCOM TOWER*	GND CON	CLNC DEL	UNICOM
<b>124.6</b>	<b>124.4 279.6</b>	<b>118.5 (CTAF) 0 257.2</b>	<b>121.7</b>	<b>121.85</b>	<b>122.95</b>



ELEV 132	<b>D</b>	TDZE 128
----------	----------	----------



2000	↑	fr 293°	COMON	↑	fr 297°	SOSYO	See planview for multiple IF locations.
							JAYSE ZOSLA
							1800 293° 1800
							GP 3.00° TCH 55
							5.1 NM 2 NM
CATEGORY		A	B	C	D		
RNP 0.30 DA		651-1		523 (600-1)			
<b>AUTHORIZATION REQUIRED</b>							