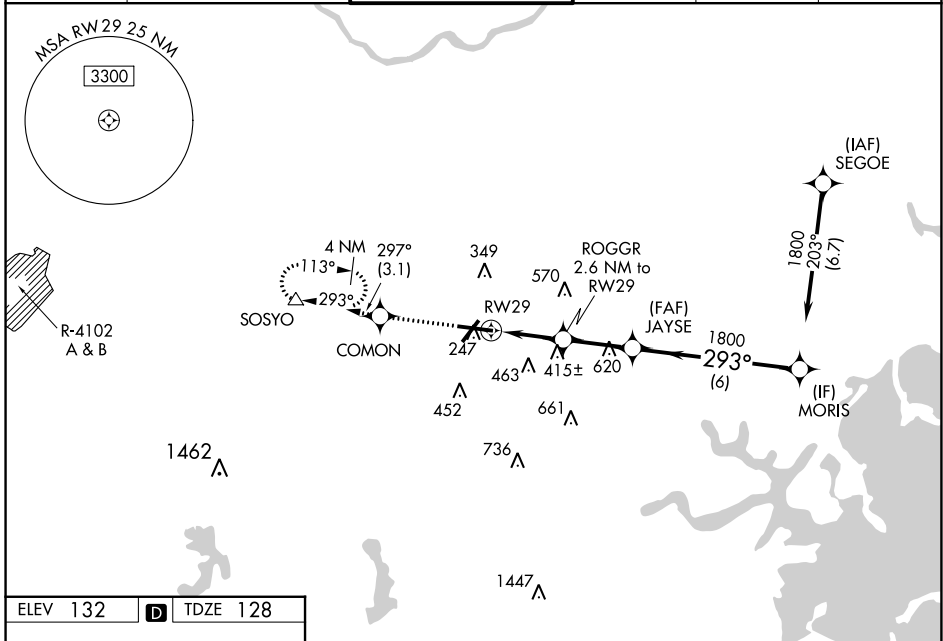


WAAS CH <b>86612</b> <b>W29A</b>	APP CRS <b>293°</b>	Rwy Idg TDZE <b>128</b> Apt Elev <b>132</b>	<b>7011</b>
--	------------------------	---	-------------

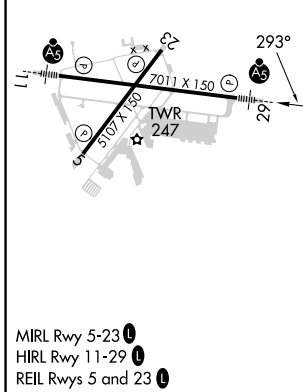
# RNAV (GPS) Z RWY 29

LAURENCE G HANSCOM FLD (BED)

RNP APCH		<p>For uncompensated Baro-VNAV systems, LNAV/VNAV NA below -16°C (4°F) or above 54°C (130°F). Baro-VNAV and VDP NA with Boston altimeter setting. When local altimeter setting not received, use Boston altimeter setting; increase LPV DA to 377 feet, LNAV/VNAV DA to 663 feet; increase all MDAs 60 feet and LNAV Cats C and D, and Circling Cat D visibility ¼ SM. For inop ALS, increase LNAV/VNAV all Cats visibility and LNAV Cat C/D to 1 ½ SM. For inop ALS when using Boston altimeter setting, increase LNAV/VNAV all Cats visibility to 1 ½ SM and LNAV Cat C/D to 1 ½ SM.</p>		<p>MALSRL MISSED APPROACH: Climb to 2000 direct COMON and on track 297° to SOSYO and hold.</p>	
ATIS <b>124.6</b>	BOSTON APP CON <b>124.4 279.6</b>	HANSCOM TOWER ★ <b>118.5 (CTAF) 0 257.2</b>	GND CON <b>121.7</b>	CLNC DEL <b>121.85</b>	UNICOM <b>122.95</b>



ELEV 132	<b>D</b>	TDZE 128
----------	----------	----------



2000	COMON	tr 297°	SOSYO
*LNAV only.			
RWY 29		ROGGR 2.6 NM to RWY 29	JAYSE 1800
*1.5 NM to RWY 29		*1.1 NM to RWY 29	*1000
1.5 NM		1.1 NM	2.5 NM
		6 NM	1800
			GP 3.00° TCH 55
CATEGORY	A	B	C
LPV DA	328-½		200 (200-½)
LNAV/VNAV DA	614-1⅛		486 (500-1⅛)
LNAV MDA	640-½	512 (600-½)	640-1 512 (600-1)
<b>C</b> CIRCLING	720-1	588 (600-1)	880-2¼ 748 (800-2¼) 920-2½ 788 (800-2½)

NE-1, 26 DEC 2024 to 23 JAN 2025

NE-1, 26 DEC 2024 to 23 JAN 2025