

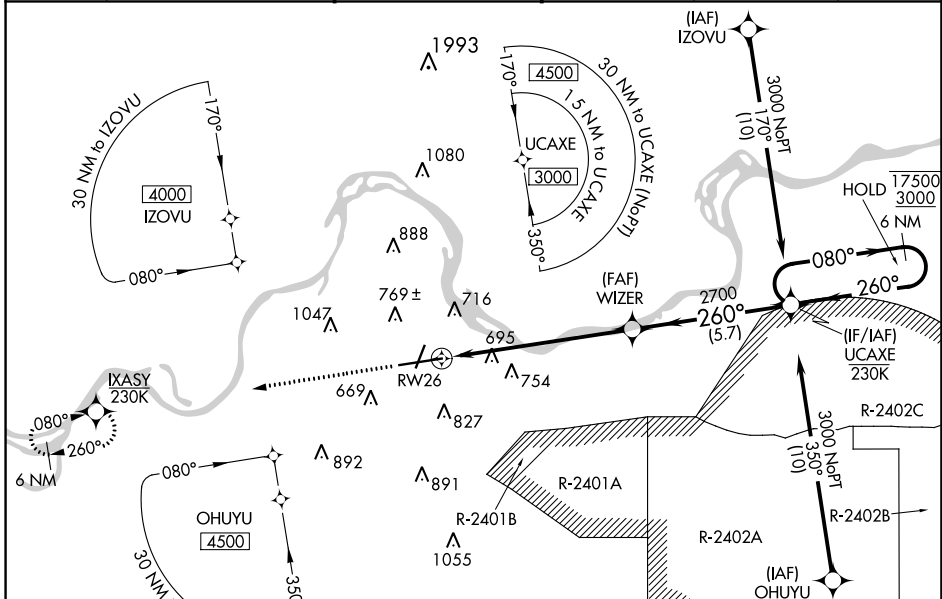
WAAS CH 87117 W26A	APP CRS 260°	Rwy Idg TDZE Apt Elev	9318 448 469
--	------------------------	-----------------------------	---

RNAV (GPS) RWY 26

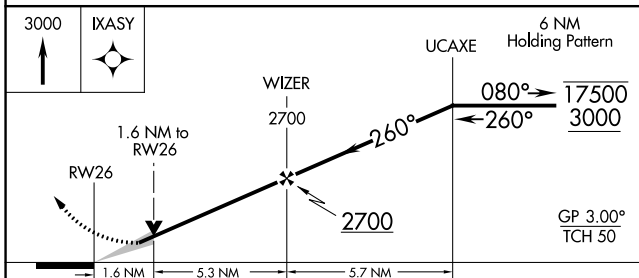
FORT SMITH RGNL (F'SM)

RNP APCH - GPS.		MALSR	MISSED APPROACH: Climb to 3000 direct IXASY and hold.
<p>⚠ Circling NA for Cat E northwest of Rwy 8 and 20. Circling Rwy 20, 26 NA at night. For uncompensated Baro-VNAV systems, LNAV/VNAV NA below -11°C or above 54°C. Circling NA for Cat E NA when R-2401B active. For inop ALS, increase LPV Cat E visibility to RVR 4000, LNAV/VNAV all Cats visibility to 1½ SM, and LNAV Cat E visibility to 1½ SM. *RVR 1800 authorized with use of FD or AP or HUD to DA.</p>			

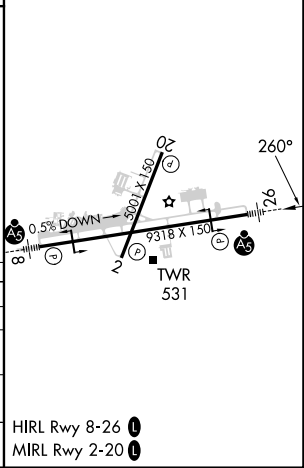
ATIS 124.775	RAZORBACK APP CON * 120.9 343.75	FORT SMITH TOWER * 118.3 (CTAF) 323.175	GND CON 121.9 275.8	CLNC DEL 133.85 278.3	UNICOM 122.95
------------------------	--	---	-------------------------------	---------------------------------	-------------------------



ELEV 469	TDZE 448
----------	----------



CATEGORY	A	B	C	D	E
LPV DA *	648/24		200 (200-½)		
LNAV/VNAV DA	962/55		514 (500-1)		
LNAV MDA	1000/24 552 (600-½)		1000/60		552 (600-1¼)
CIRCLING	1140-1 671 (700-1)		1400-2¾ 931 (1000-2¾)		1400-3 931 (1000-3)



SC-1, 26 DEC 2024 to 23 JAN 2025

SC-1, 26 DEC 2024 to 23 JAN 2025