

WAAS CH <b>65638</b> <b>W23A</b>	APP CRS <b>235°</b>	Rwy Idg TDZE <b>78</b> Apt Elev <b>79</b>	<b>5000</b>
--	------------------------	---	-------------

# RNAV (GPS) RWY 23

NEW BEDFORD RGNL (E/WB)

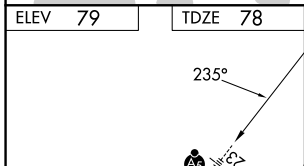
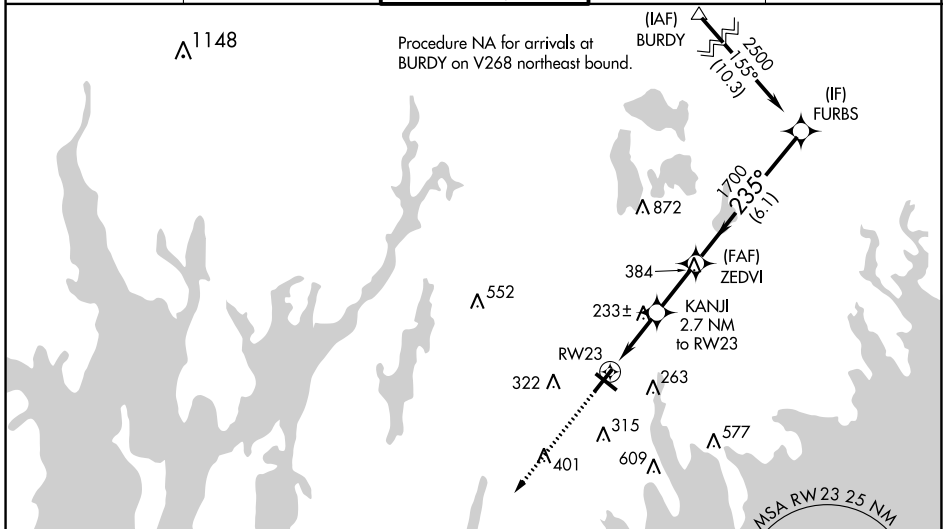
RNP APCH-GPS.

Baro-VNAV and VDP NA when using Taunton altimeter setting. For uncompensated Baro-VNAV systems, LNAV/VNAV NA below -16°C or above 54°C. Helicopter visibility reduction below ¾ SM NA. When local altimeter setting not received, use Taunton altimeter setting and increase LPV DA to 393 feet, increase LNAV/VNAV DA to 412 feet; increase all MDA 40 feet and LNAV Cats C and D and Circling Cat C visibility ¼ SM. For inop MALSRL, increase LPV all Cats visibility ½ mile, LNAV/VNAV and LNAV Cat A/B visibility ¼ mile. For inop Taunton altimeter setting, increase LNAV/VNAV all Cats visibility ⅓ mile, LNAV Cat A/B visibility ¼ mile and Cat C/D visibility ⅓ mile.

MALSRL

MISSED APPROACH: Climb to 2100 direct BONNI and hold.

ATIS <b>126.85</b>	PROVIDENCE APP CON* <b>128.7 269.525</b>	NEW BEDFORD TOWER* <b>118.1 (CTAF) 239.0</b>	GND CON <b>121.9</b>	UNICOM <b>122.95</b>
-----------------------	---	---	-------------------------	-------------------------



2100	BONNI	KANJI 2.7 NM to RW23	ZEDVI 1700	FURBS 2500
*LNAV only.		*1.2 NM to RW23	980*	1700
1.2		1.5 NM	2.3 NM	6.1 NM

CATEGORY	A	B	C	D
LPV DA		359-¾	281 (300-¾)	
LNAV/VNAV DA		378-¾	300 (300-¾)	
LNAV MDA		500-¾	422 (500-¾)	
CIRCLING	620-1	640-1	720-1¾	960-3
	541 (600-1)	561 (600-1)	641 (700-1¾)	881 (900-3)

- MIRL Rwy 14-32
- HIRL Rwy 5-23
- REIL Rwy 32

NE-1, 26 DEC 2024 to 23 JAN 2025

NE-1, 26 DEC 2024 to 23 JAN 2025