

VORTAC OLM 113.4 Chan 81	APP CRS 356°	Rwy Idg TDZE 208 Apt Elev 208
--	------------------------	---

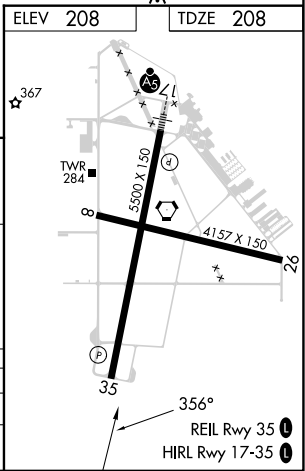
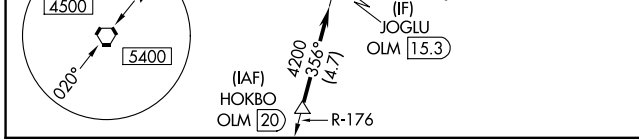
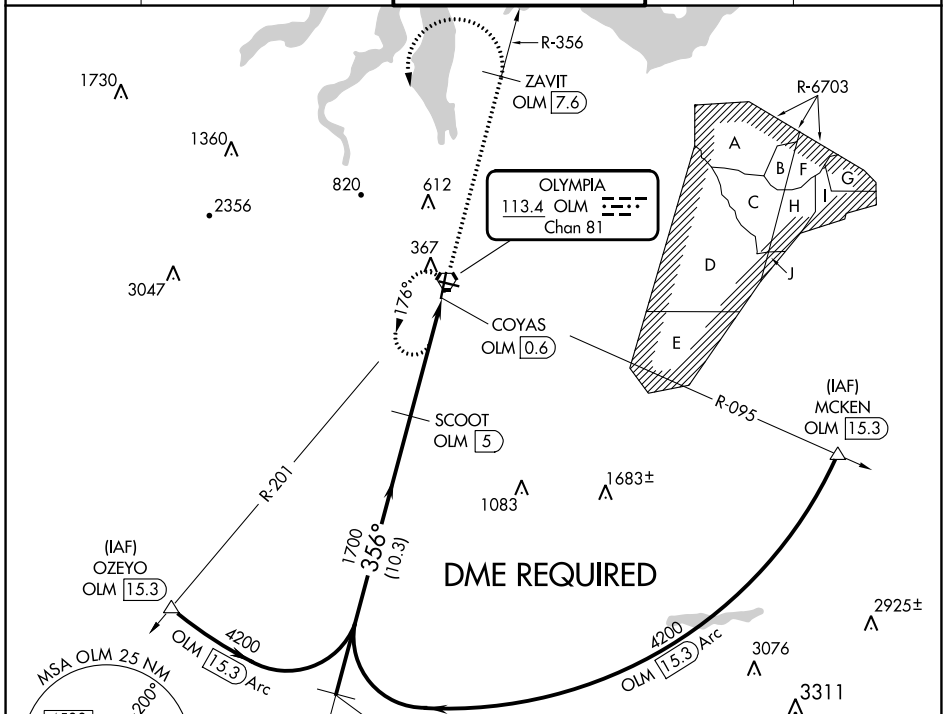
VOR RWY 35

OLYMPIA RGNL (OLM)

▼ Rwy 35 helicopter visibility reduction below ¾ SM NA.
▲ DME required.

MISSED APPROACH: Climb to 4000 on OLM VORTAC R-356 to ZAVIT/OLM 7.6 DME then climbing left turn direct OLM VORTAC and hold.

ATIS★ 135.725	SEATTLE APP CON 121.1 290.9	OLYMPIA TOWER★ 124.4 (CTAF) 254.25	GND CON 121.6	UNICOM 122.95
-------------------------	---------------------------------------	---	-------------------------	-------------------------



	JOGLU OLM 15.3	SCOOT OLM 5	4000	ZAVIT OLM 7.6	OLM
	4200	1700	OLM R-356	OLM VORTAC	
	356°	3.13° TCH 50	OLM 2.5	COYAS OLM 0.6	
	10.3 NM	2.5 NM	1.8 NM		

CATEGORY	A	B	C	D
S-35	840-1	632 (700-1)	840-1¾	632 (700-1¾)
CIRCLING	840-1 632 (700-1)	860-1 652 (700-1)	1020-2½ 812 (900-2½)	1020-2¾ 812 (900-2¾)

NW-1, 26 DEC 2024 to 23 JAN 2025

NW-1, 26 DEC 2024 to 23 JAN 2025