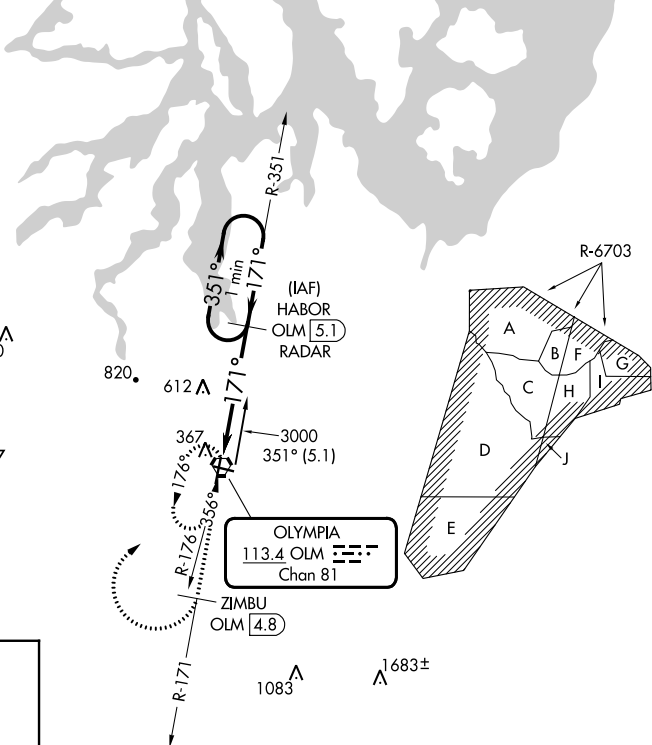
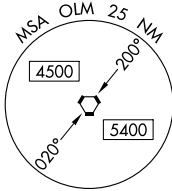


VORTAC OLM <b>113.4</b> Chan 81	APP CRS <b>171°</b>	Rwy Idg TDZE Apt Elev	<b>N/A</b> <b>N/A</b> <b>208</b>
---------------------------------------	------------------------	-----------------------------	--

**VOR-A**  
OLYMPIA RGNL (OLM)

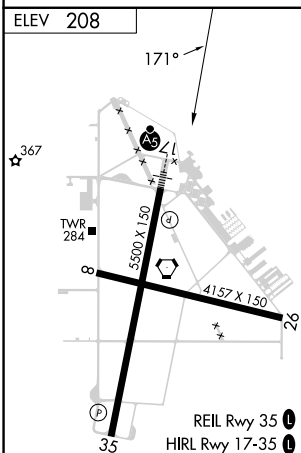
**⚠** DME required. MISSED APPROACH: Climb to 4200 on OLM VORTAC R-171 to ZIMBU/OLM 4.8 DME and climbing right turn direct OLM VORTAC and hold, continue climb-in-hold to 4200.

ATIS★ <b>135.725</b>	SEATTLE APP CON <b>121.1 290.9</b>	OLYMPIA TOWER★ <b>124.4</b> (CTAF) <b>0 254.25</b>	GND CON <b>121.6</b>	UNICOM <b>122.95</b>
-------------------------	---------------------------------------	---	-------------------------	-------------------------

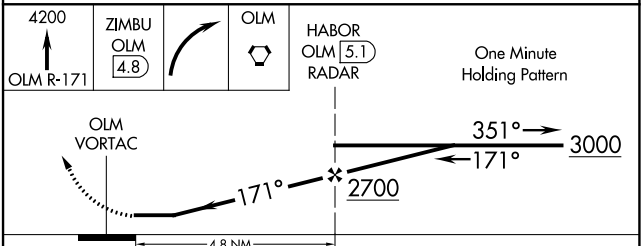


NW-1, 26 DEC 2024 to 23 JAN 2025

NW-1, 26 DEC 2024 to 23 JAN 2025



**DME or RADAR REQUIRED**



FAF to MAP 4.8 NM						
Knots	60	90	120	150	180	
Min:Sec	4:48	3:12	2:24	1:55	1:36	
CATEGORY	A		B		C	D
<input checked="" type="checkbox"/> CIRCLING	880-1		672 (700-1)		1020-2½ 812 (900-2½)	1020-2¾ 812 (900-2¾)