

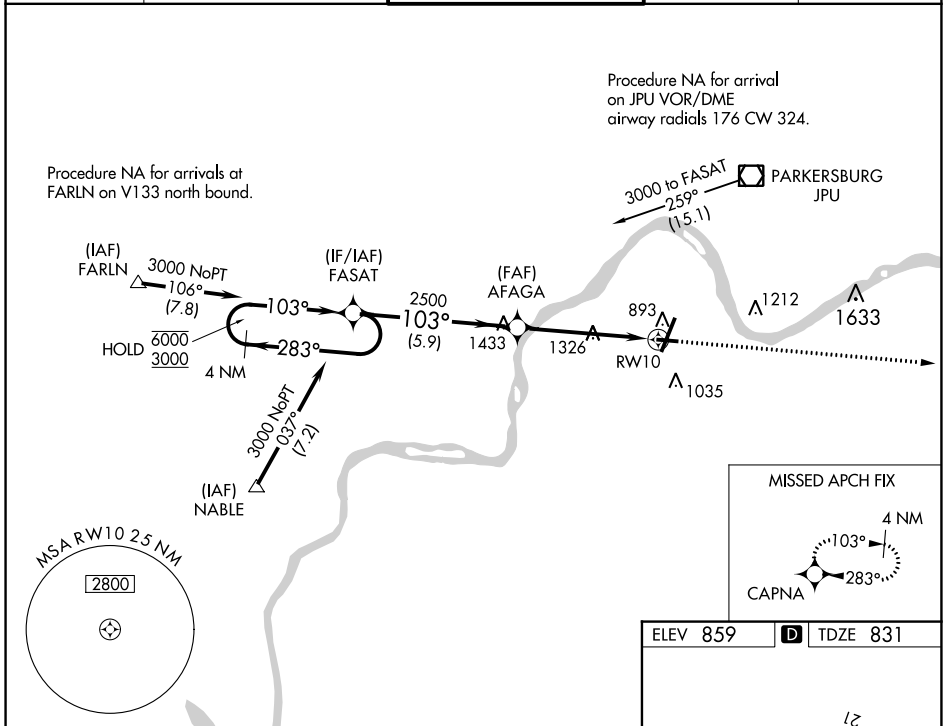
WAAS CH <b>97627</b> <b>W10A</b>	APP CRS <b>103°</b>	Rwy Idg <b>4002</b> TDZE <b>831</b> Apt Elev <b>859</b>
--	------------------------	---

# RNAV (GPS) RWY 10

MID-OHIO VALLEY RGNL (PKB)

RNP APCH.	<p>▼ Rwy 10 helicopter visibility reduction below 1 SM NA. When local altimeter setting not received, use Athens/Albany altimeter setting and increase all MDA 100 feet, increase visibility LP all Cats, LNAV all Cats and Circling Cat D ½ SM, and Circling Cats A/C ¼ SM. Straight-in Rwy 10 NA at night, Circling Rwy 10, 28 NA at night.</p>	MISSED APPROACH: Climb to 3000 direct CAPNA and hold.
-----------	---	--

ATIS <b>124.35</b>	INDIANAPOLIS CENTER <b>125.55 317.475</b>	PARKERSBURG TOWER * <b>123.7 (CTAF) 257.8</b>	GND CON <b>126.45</b>	UNICOM <b>122.95</b>
-----------------------	--	--	--------------------------	-------------------------

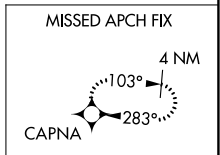
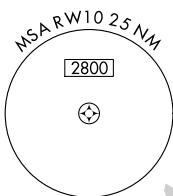


Procedure NA for arrival on JPU VOR/DME airway radials 176 CW 324.

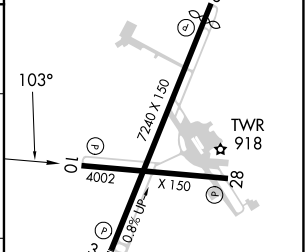
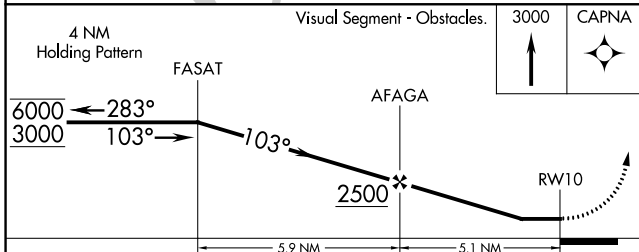
Procedure NA for arrivals at FARLN on V133 north bound.

NE-4, 26 DEC 2024 to 23 JAN 2025

NE-4, 26 DEC 2024 to 23 JAN 2025



ELEV 859	<b>D</b> TDZE 831
----------	-------------------



CATEGORY	A	B	C	D
LP MDA	1580-1 749 (800-1)	1580-1½ 749 (800-1¼)	1580-2	749 (800-2)
LNAV MDA	1600-1 769 (800-1)	1600-1½ 769 (800-1¼)	1600-2½	769 (800-2½)
CIRCLING	1600-1 741 (800-1)	1600-1½ 741 (800-1¼)	1640-2½	781 (800-2½)

HIRL Rwy 3-21 and 10-28 **1**  
REIL Rwy 10 and 21 **1**  
REIL Rwy 28