

SAGINAW, MICHIGAN

AL-648 (FAA)

24249

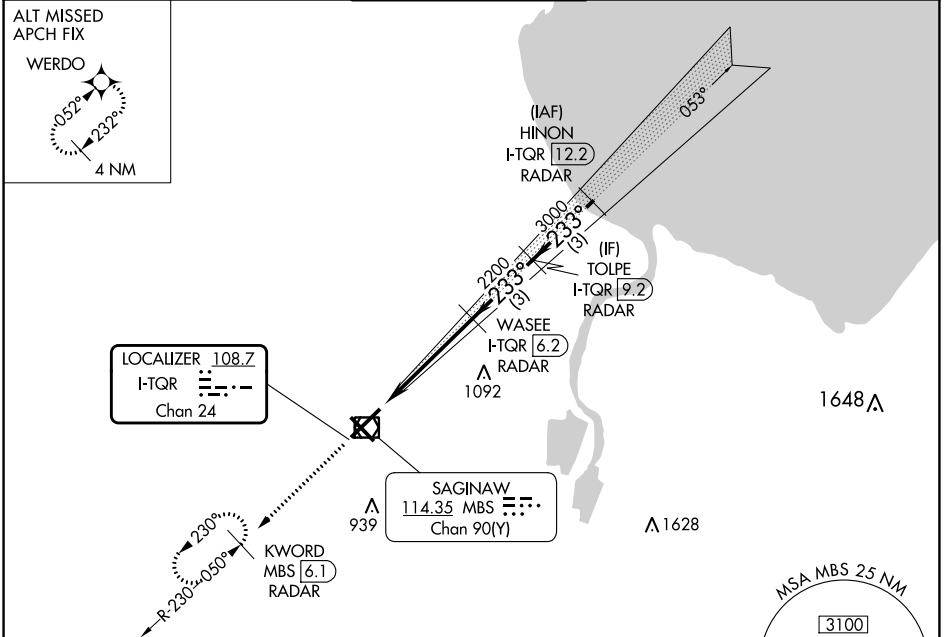
LOC/DME I-TQR 108.7 Chan 24	APP CRS 233°	Rwy Idg 8002 TDZE 661 Apt Elev 668
--	------------------------	---

ILS or LOC RWY 23

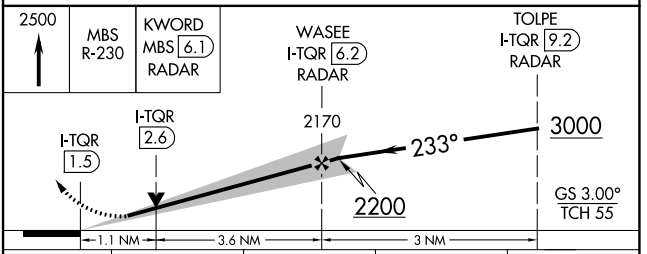
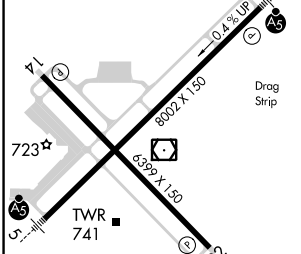
MBS INTL (MBS)

DME or RADAR required. RADAR required for procedure entry.	MALSR	MISSED APPROACH: Climb to 2500 on MBS VOR/DME R-230 to KWORD/MBS 6.1 DME/RADAR and hold.
▽ *RVR 1800 authorized with use of FD or AP or HUD to DA.	⚠	

ATIS 125.925	GREAT LAKES APP CON * 126.45 235.625	SAGINAW TOWER * 120.1(CTAF) 257.7	GND CON 121.7	CLNC DEL 121.85	UNICOM 122.95
------------------------	--	---	-------------------------	---------------------------	-------------------------



ELEV 668	D	TDZE 661
----------	----------	----------



REIL Rwy 14 and 32				
HIRL Rwy 5-23 and 14-32				
FAF to MAP 4.7 NM				
Knots	60	90	120	150
Min:Sec	4:42	3:08	2:21	1:53
	180			
	1:53	1:34		
C CIRCLING	1080-1 412 (500-1)	1120-1 452 (500-1)	1240-1½ 572 (600-1½)	1240-2 572 (600-2)
S-ILS 23 *	861/24 200 (200-½)			
S-LOC 23	1060/24 399 (400-½)		1060/35 399 (400-¾)	

SAGINAW, MICHIGAN
Amdt 5A 25JAN24

43°32'N-84°05'W

MBS INTL (MBS) ILS or LOC RWY 23

EC-1, 26 DEC 2024 to 23 JAN 2025

EC-1, 26 DEC 2024 to 23 JAN 2025