

# RNAV (GPS)-A

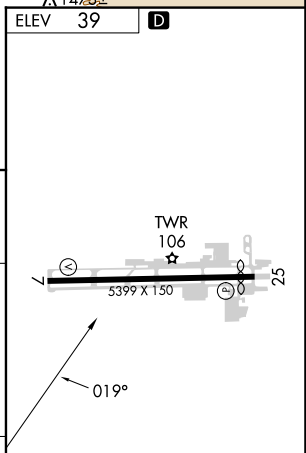
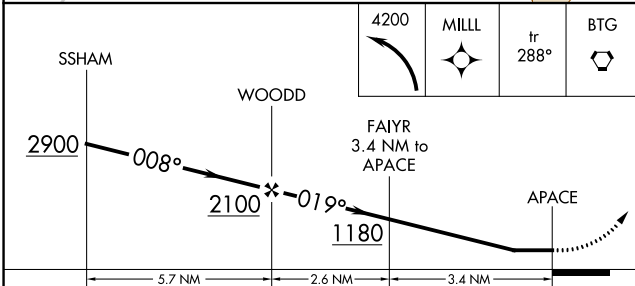
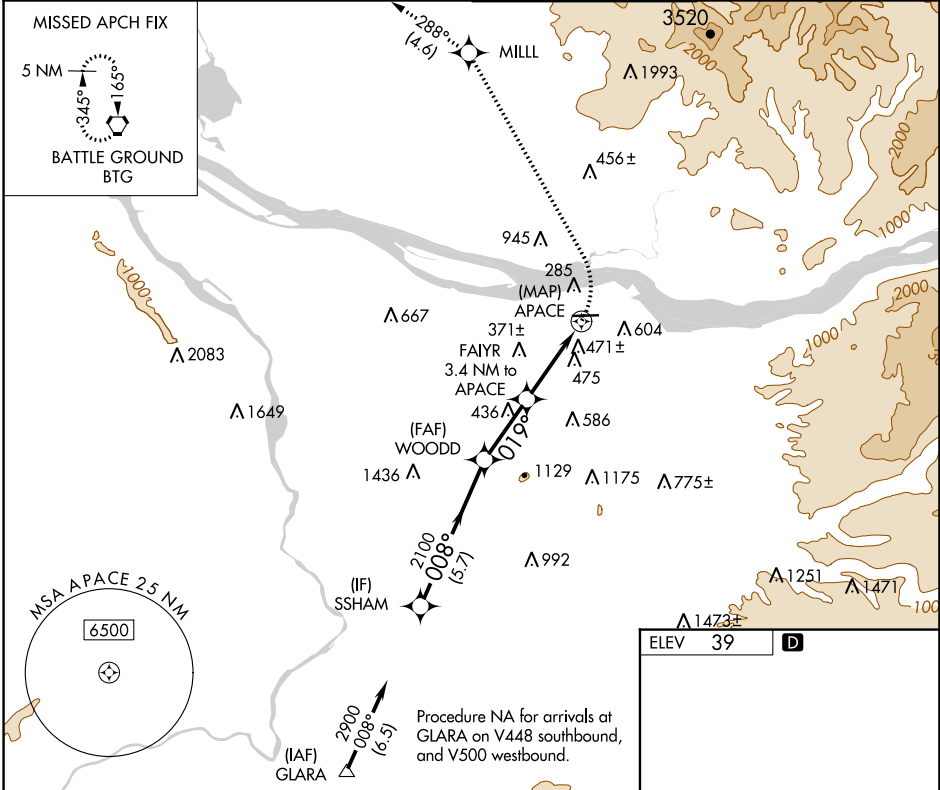
## PORTLAND-TROUTDALE (T'D)

APP CRS <b>019°</b>	Rwy Idg TDZE Apt Elev	N/A N/A <b>39</b>
------------------------	-----------------------------	-------------------------

**⚠** DME/DME RNP-0.3 NA. When local altimeter setting not received, use Portland Intl altimeter setting and increase all MDA 40 feet.

**⚠** MISSED APPROACH: Climbing left turn to 4200 direct MILL and on track 288° to BTG VORTAC and hold, continue climb-in-hold to 4200.

ATIS <b>135.625</b>	PORTLAND APP CON <b>124.35 299.2</b>	TROUTDALE TOWER * <b>120.9 (CTAF) 254.3</b>	GND CON <b>121.8</b>	UNICOM <b>122.95</b>
------------------------	---	--	-------------------------	-------------------------



CATEGORY	A	B	C	D
<b>C</b> CIRCLING	1000-1¼ 961 (1000-1¼)	1040-1½ 1001 (1100-1½)	1300-3	1261 (1300-3)

REIL Rwy 7 and 25  
MIRL Rwy 7-25 **⓪**

NW-1, 26 DEC 2024 to 23 JAN 2025

NW-1, 26 DEC 2024 to 23 JAN 2025