

GAVNN SEVEN ARRIVAL (RNAV) Transition Routes

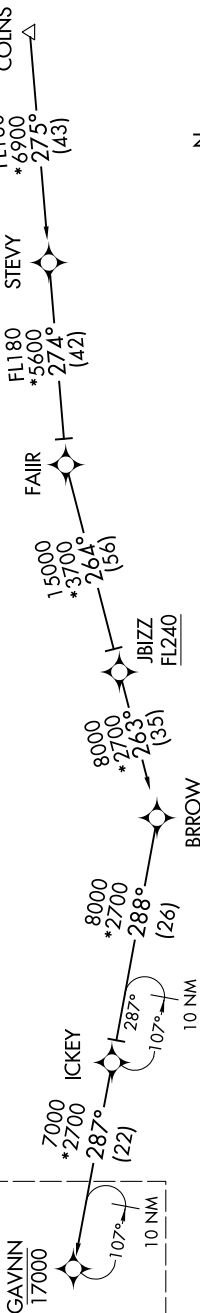
CINCINNATI/NORTHERN KENTUCKY INTL (CVG)

COVINGTON, KENTUCKY

RNAV 1 - DME/DME/IRU or GPS.
RADAR required.

CINCINNATI APP CON
119.7 363.15 (090°-269°)
123.875 363.15 (270°-089°)
D-ATIS
134.375

See following page
for arrival routes



(CONTINUED ON FOLLOWING PAGE)

COLNS TRANSITION (COLNS.GAVNN7):
FAIR TRANSITION (FAIR.GAVNN7):

NOTE: Chart not to scale.

GAVNN SEVEN ARRIVAL (RNAV) Transition Routes

COVINGTON, KENTUCKY