

(KENLN6.KENLN) 24081

# KENLN SIX DEPARTURE (RNAV)

CINCINNATI/NORTHERN KENTUCKY INTL (CVG)

AL-655 (FAA)

COVINGTON, KENTUCKY

CINCINNATI DEP CON  
 126.65 254.25 (001°-180°)  
 128.7 254.25 (181°-360°)  
 D-ATIS DEP 135.3  
 CLNC DEL 127.175  
 CPDLC  
 GND CON 121.7  
 CINCINNATI TOWER  
 118.3 (RWYS 18C/36C, 9/27)  
 118.975 360.85 (RWY 18L/36R)  
 133.325 (RWY 18R/36L)

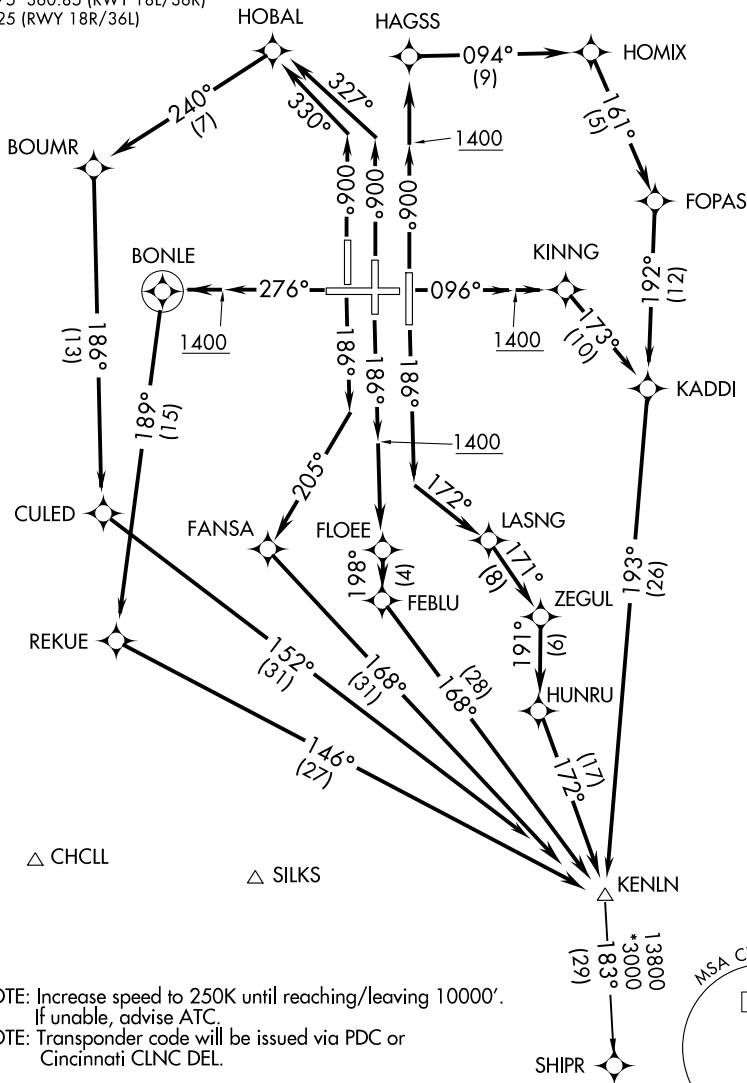
RNAV 1 - DME/DME/IRU or GPS.

RADAR required for non-GPS equipped aircraft.

**TOP ALTITUDE:  
(JETS) 5000/(PROPS) 4000**

### TAKEOFF MINIMUMS

Rwys 9, 18L/C/R, 27, 36L/C/R: Standard.



NOTE: Increase speed to 250K until reaching/leaving 10000'.

If unable, advise ATC.

NOTE: Transponder code will be issued via PDC or Cincinnati CLNC DEL.

NOTE: Chart not to scale.

(CONTINUED ON FOLLOWING PAGE)

# KENLN SIX DEPARTURE (RNAV)

(KENLN6.KENLN) 21MAR24

COVINGTON, KENTUCKY

CINCINNATI/NORTHERN KENTUCKY INTL (CVG)

SE-1, 26 DEC 2024 to 23 JAN 2025

SE-1, 26 DEC 2024 to 23 JAN 2025