

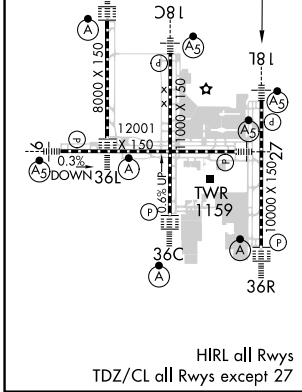
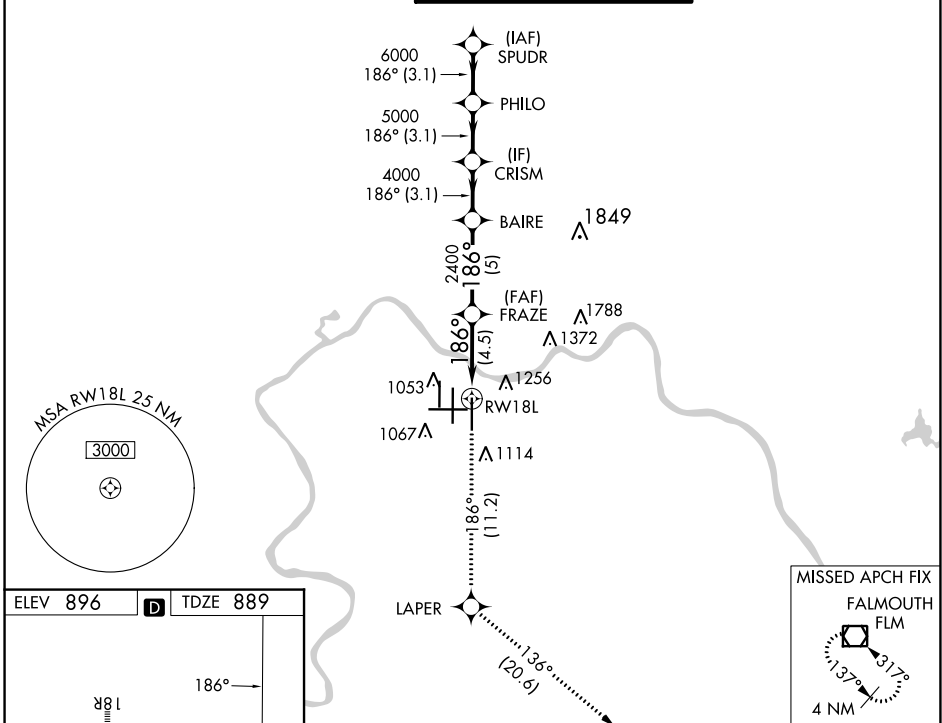
APP CRS	Rwy Idg	10000
186°	TDZE	889
	Apt Elev	896

RNAV (RNP) Z RWY 18L

CINNINNATI/NORTHERN KENTUCKY INTL (CVG)

RNP AR APCH - GPS.		MALSR	MISSED APPROACH: Climb to 3000 on track 186° to LAPER and on track 136° to FLM VOR/DME and hold.	
<p>Simultaneous approach authorized. For uncompensated Baro-VNAV systems, procedure NA below -16°C or above 47°C. For inop ALS, increase RNP 0.25 all Cats visibility to RVR 6000, RNP 0.30 all Cats visibility to 1½ SM.</p>				

D-ATIS	CINNINNATI APP CON	CINNINNATI TOWER	GND CON	CLNC DEL	CPDLC
ARR 134.375 DEP 135.3	119.7 363.15 (090°-269°) 123.875 363.15 (270°-089°)	118.975 360.85 (RWY 18L/36R) 118.3 (RWYS 18C/36C, 09/27) 133.325 (RWY 18R/36L)	121.7	127.175	



ELEV 896	TDZE 889	MISSED APCH FIX FALMOUTH FLM	
3000	tr 186°	LAPER	tr 136°
VGSi and RNAV glidepath not coincident (VGSi Angle 3.00/TCH 71).		FLM	
RWY 18L		FRAZE	SPUDR
2400		BAIRE	7000
2400		CRISM	6000
4.5 NM		5 NM	3.1 NM
3.1 NM		3.1 NM	3.1 NM
GP 3.00°	TCH 55		
CATEGORY	A	B	D
RNP 0.25 DA	1283/35 394 (400-¾)		
RNP 0.30 DA	1472-1¼ 583 (600-1¼)		

AUTHORIZATION REQUIRED

SE-1, 26 DEC 2024 to 23 JAN 2025

SE-1, 26 DEC 2024 to 23 JAN 2025