

WAAS CH 86809 W27A	APP CRS 276°	Rwy Idg 12000 TDZE 875 Apt Elev 896
--	------------------------	--

RNAV (GPS) Y RWY 27

CINCINNATI/NORTHERN KENTUCKY INTL (CVG)

RNP APCH-GPS.

▼ For uncompensated Baro-VNAV systems, LNAV/VNAV NA below -16° C or above 54° C. For inop ALS, increase LNAV/VNAV all Cts visibility to 1 3/8 SM.
**RVR 1800 authorized with use of FD or AP or HUD to DA.

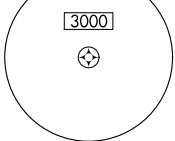
MALSR



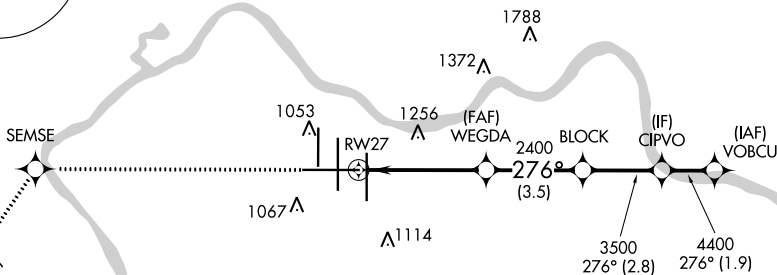
MISSED APPROACH: Climb to 3000 direct SEMSE then on track 220° to AVIEW and hold.

D-ATIS ARR 134.375 DEP 135.3	CINCINNATI APP CON 119.7 363.15 (090°-269°) 123.875 363.15 (270°-089°)	CINCINNATI TOWER 118.975 360.85 (RWY 18L/36R) 118.3 (RWYS 18C/36C, 09/27) 133.325 (RWY 18R/36L)	GND CON 121.7	CLNC DEL 127.175	CPDLC
---	--	---	-------------------------	----------------------------	-------

MSA RW27 25 NM



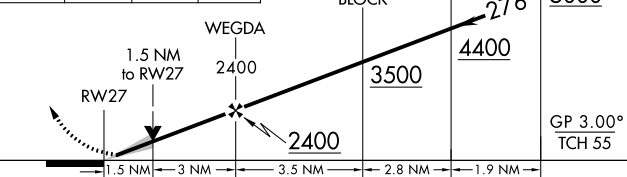
△ 1849



MISSED APCH FIX

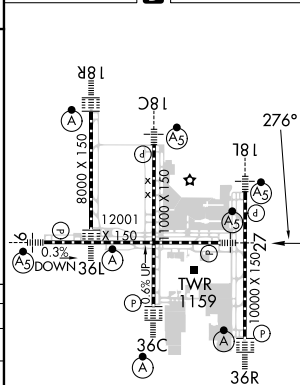


3000	SEMSE	Tr 220°	AVIEW	VGSI and RNAV glidepath not coincident (VGSI Angle 3.00/TCH 68).
------	-------	---------	-------	--



CATEGORY	A	B	C	D
LPV DA **		1075/24	200 (200-1/2)	
LNAV/VNAV DA		1349/50	474 (500-1)	
LNAV MDA	1420/24	545 (600-1/2)	1420/60	545 (600-1/4)
CIRCLING	1460-1	564 (600-1)	1560-1 3/4 664 (700-3/4)	1560-2 664 (700-2)

ELEV 896 D TDZE 875



HIRL all Rwys
TDZ/CL all Rwys except 27

SE-1, 26 DEC 2024 to 23 JAN 2025

SE-1, 26 DEC 2024 to 23 JAN 2025