

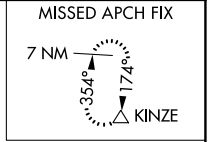
WAAS CH <b>53709</b> <b>W07A</b>	APP CRS <b>071°</b>	Rwy Idg TDZE Apt Elev	<b>5371</b> <b>3702</b> <b>3732</b>
--	------------------------	-----------------------------	---

# RNAV (GPS) RWY 7

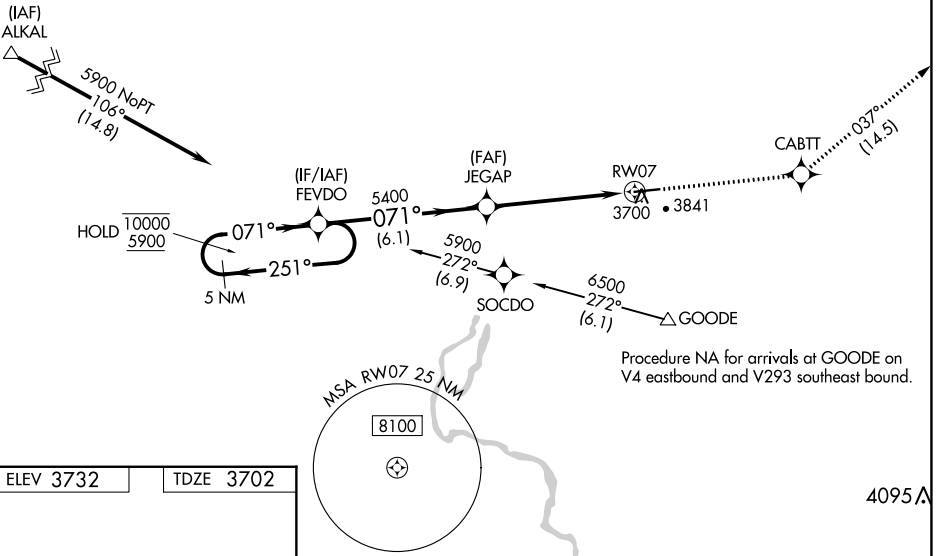
GOODING MUNI (GNG)

RNP APCH - GPS.	MISSED APPROACH: Climb to 7400 direct CABTT and on track 037° to KINZE and hold.
<p>▼ For uncompensated Baro-VNAV systems, procedure NA below -22°C or above 54°C.</p> <p>▲</p>	

AWOS-3PT <b>124.175</b>	SALT LAKE CENTER <b>118.05 363.0</b>	UNICOM <b>122.8 (CTAF) 0</b>
----------------------------	---	---------------------------------



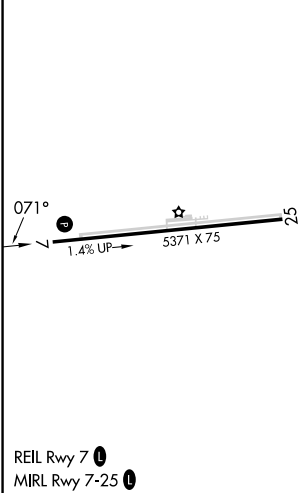
Procedure NA for arrivals at ALKAL on V253 northwest bound and T470 westbound.



NW-1, 26 DEC 2024 to 23 JAN 2025

NW-1, 26 DEC 2024 to 23 JAN 2025

ELEV 3732	TDZE 3702
-----------	-----------



VGSi and RNAV glidepath not coincident (VGSi Angle 2.75/TCH 40).		7400	CABTT	KINZE
5 NM Holding Pattern		↑	✦	tr 037°
FEVDO				△
10000 ← 251°		JEGAP		
5900 → 071°		5400	0.9 NM to RWY 7	
GP 3.00°				
TCH 45				
		6.1 NM	4.4 NM	0.9
CATEGORY	A	B	C	D
LPV DA		3952-¾	250 (300-¾)	
LNNAV/VNAV DA		3952-¾	250 (300-¾)	
LNNAV MDA	3960-1	258 (300-1)	3960-¾	258 (300-¾)