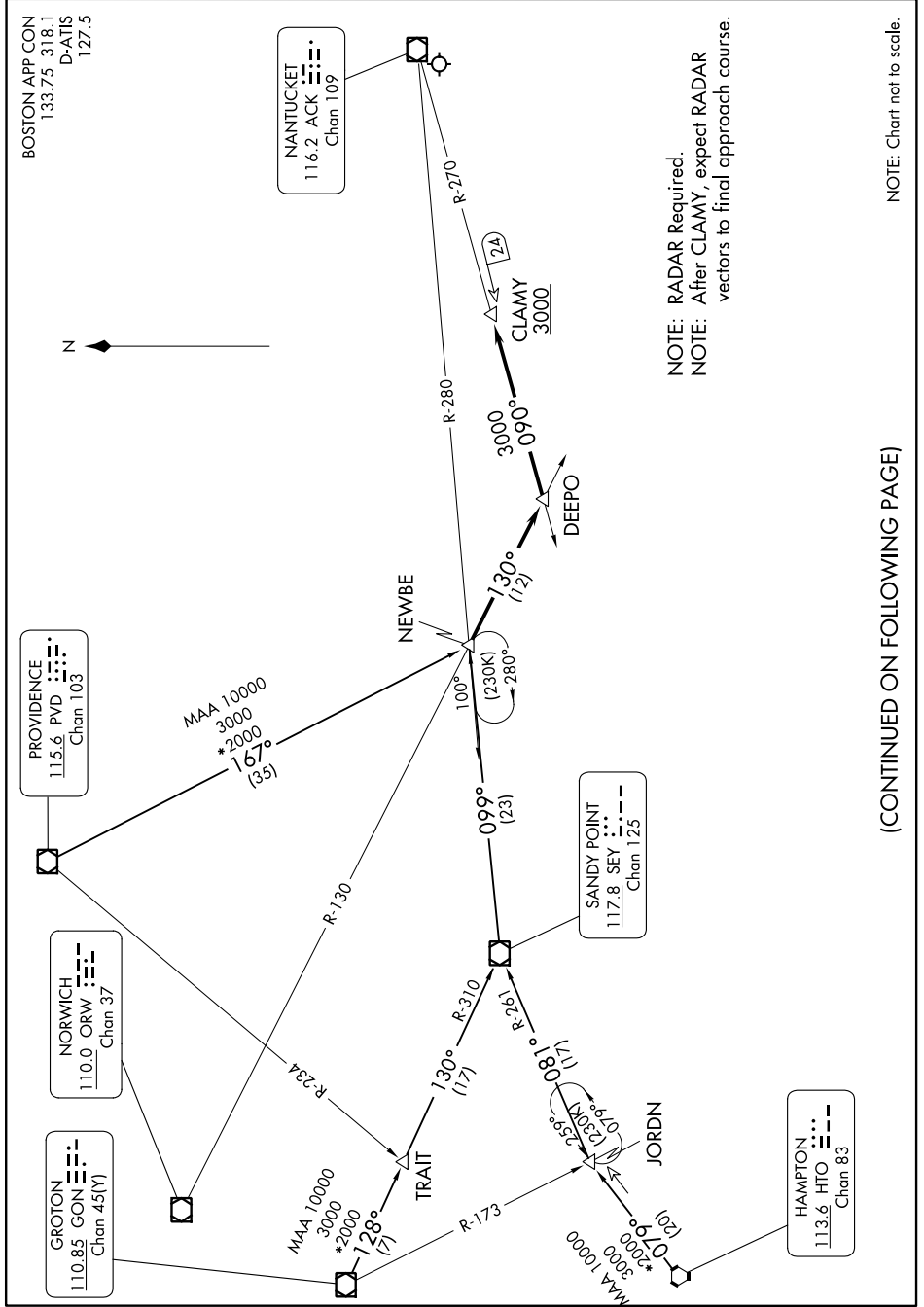


# NEWBE THREE ARRIVAL

AL-659 (FAA)

NANTUCKET MEML (ACK)  
NANTUCKET, MASSACHUSETTS

NE-1, 26 DEC 2024 to 23 JAN 2025



NOTE: RADAR Required.  
 NOTE: After CLAMY, expect RADAR vectors to final approach course.

NOTE: Chart not to scale.

(CONTINUED ON FOLLOWING PAGE)

NE-1, 26 DEC 2024 to 23 JAN 2025

# NEWBE THREE ARRIVAL

NANTUCKET, MASSACHUSETTS  
NANTUCKET MEML (ACK)