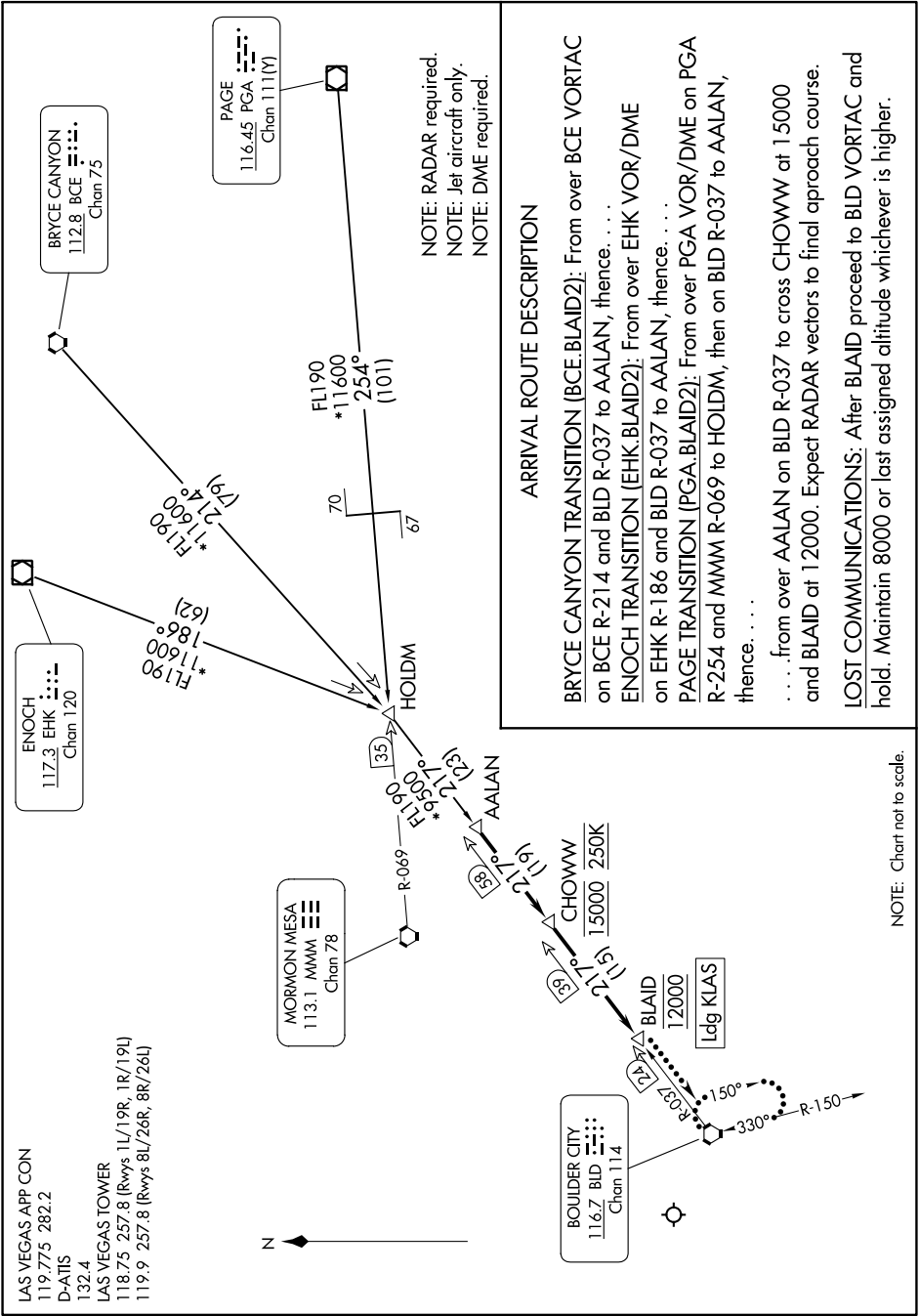


BLAID TWO ARRIVAL

AL-662 (FAA)

HARRY REID INTL (LAS)
LAS VEGAS, NEVADA

SW-4, 26 DEC 2024 to 23 JAN 2025



LAS VEGAS APP CON
119.775 282.2
D-ARTIS
132.4
LAS VEGAS TOWER
118.75 257.8 (Rvys 1L/19R, 1R/19L)
119.9 257.8 (Rvys 8L/26R, 8R/26L)

ARRIVAL ROUTE DESCRIPTION

BRYCE CANYON TRANSITION (BCE:BLAID2): From over BCE VORTAC on BCE R-214 and BLD R-037 to AALAN, thence. . . .

ENOCH TRANSITION (EHK:BLAID2): From over EHK VOR/DME on EHK R-186 and BLD R-037 to AALAN, thence. . . .

PAGE TRANSITION (PGA:BLAID2): From over PGA VOR/DME on PGA R-254 and MMM R-069 to HOLIDM, then on BLD R-037 to AALAN, thence. . . .

. . . .from over AALAN on BLD R-037 to cross CHOWWW at 15000 and BLAID at 12000. Expect RADAR vectors to final approach course.

LOST COMMUNICATIONS: After BLAID proceed to BLD VORTAC and hold. Maintain 8000 or last assigned altitude whichever is higher.

NOTE: RADAR required.
NOTE: Jet aircraft only.
NOTE: DME required.

NOTE: Chart not to scale.

SW-4, 26 DEC 2024 to 23 JAN 2025