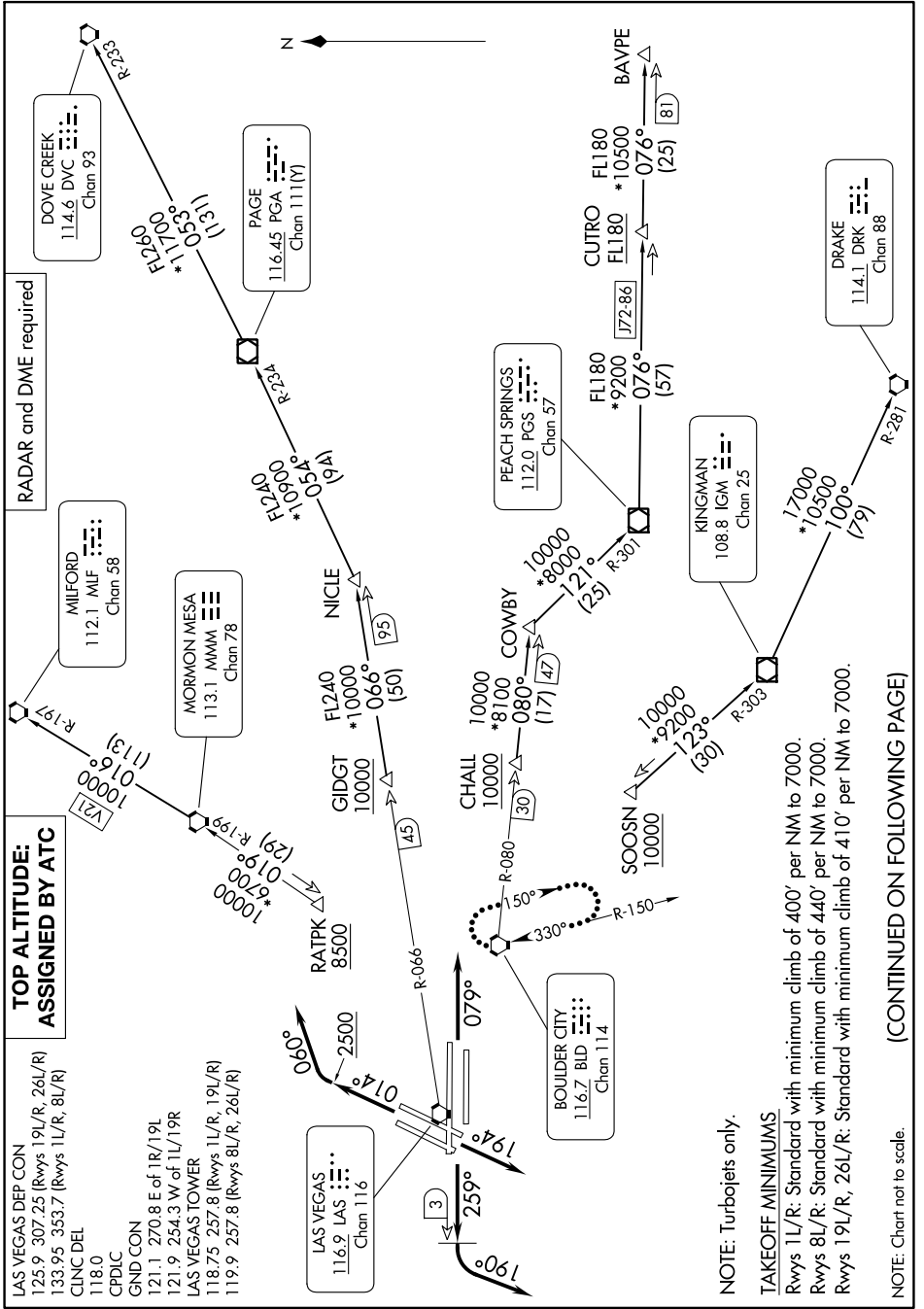


HOOVER EIGHT DEPARTURE

AL-662 (FAA)

HARRY REID INTL (LAS)
LAS VEGAS, NEVADA

SW-4, 26 DEC 2024 to 23 JAN 2025



HOOVER EIGHT DEPARTURE

LAS VEGAS, NEVADA
HARRY REID INTL (LAS)

SW-4, 26 DEC 2024 to 23 JAN 2025

(CONTINUED ON FOLLOWING PAGE)

NOTE: Turbojets only.

TAKEOFF MINIMUMS

Rwys 1L/R: Standard with minimum climb of 400' per NM to 7000.

Rwys 8L/R: Standard with minimum climb of 440' per NM to 7000.

Rwys 19L/R, 26L/R: Standard with minimum climb of 410' per NM to 7000.

NOTE: Chart not to scale.