

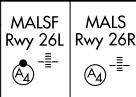
LOC/DME I-RLE	APP CRS	Rwy Idg	26L	26R
111.5	259°	TDZE	10526	12638
Chan 52		Apt Elev	2069	2067
			2181	2181

ILS Z or LOC Z RWY 26L

HARRY REID INTL (LAS)

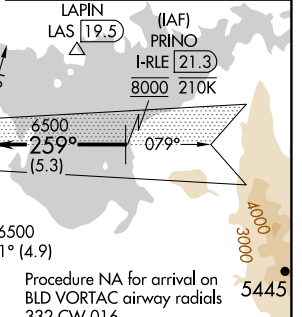
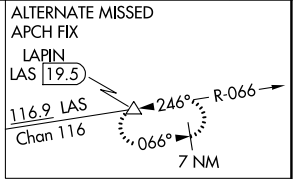
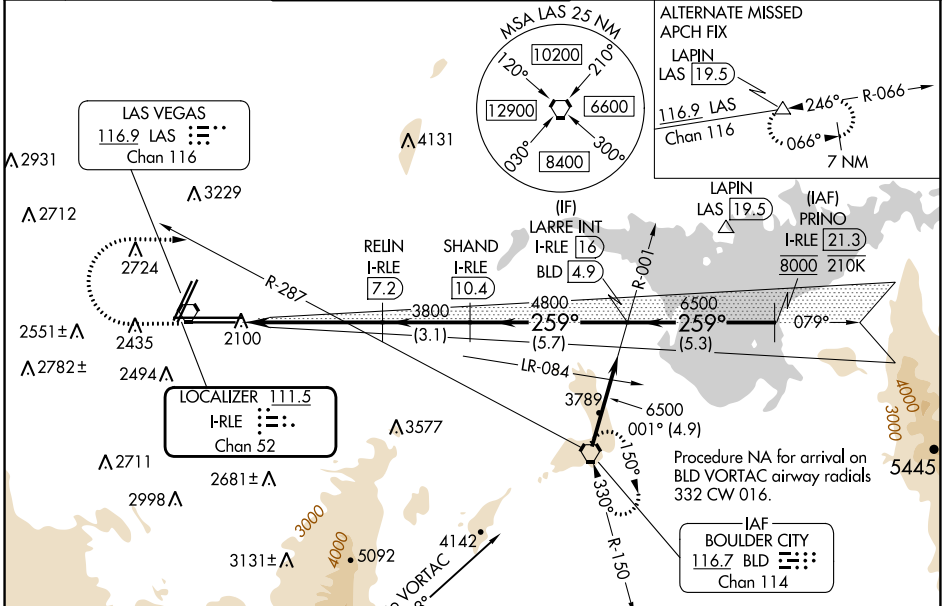
DME required.

⚠ Inop table does not apply to S-ILS 26L and Sidestep 26R.
⚠ For inop ALS, increase S-LOC 26L Cat C/D/E visibility to 1 3/8 SM.

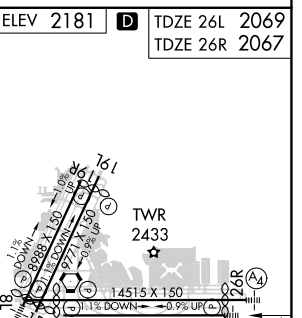
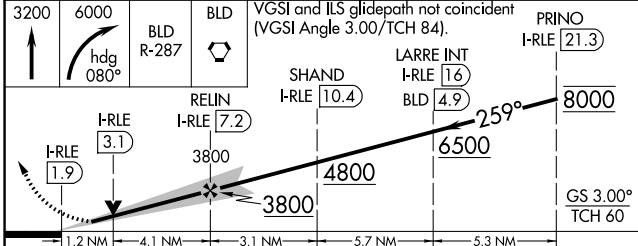


MISSED APPROACH: Climb to 3200 then climbing right turn to 6000 heading 080° and on BLD R-287 to BLD VORTAC and hold, continue climb-in-hold to 6000.

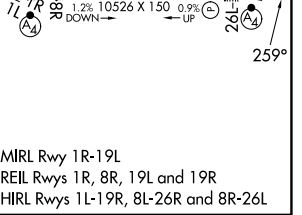
D-ATIS	LAS VEGAS APP CON	LAS VEGAS TOWER	GND CON	CLNC DEL	CPDLC
132.4	125.025 379.15 (West) 119.775 282.2 (East)	118.75 257.8 (Rwy 1L/19R, 1R/19L) 119.9 257.8 (Rwy 8L/26R, 8R/26L)	121.1 270.8 E of 1R/19L 121.9 254.3 W of 1L/19R	118.0	



ELEV 2181	TDZE 26L 2069	TDZE 26R 2067
-----------	---------------	---------------



CATEGORY	A	B	C	D	E
S-ILS 26L	2269-3/4 200 (100-3/4)				
S-LOC 26L	2520-3/4	451 (400-3/4)	2520-1 451 (400-1)		
SIDESTEP 26R	2560-1	493 (400-1)	2560-1 1/2 493 (400-1 1/2)	2560-2	493 (400-2)
CIRCLING	3020-1 1/4 839 (900-1 1/4)	3060-1 1/4 879 (900-1 1/4)	3100-2 3/4 919 (1000-2 3/4)	3540-3	1359 (1400-3)



SW-4, 26 DEC 2024 to 23 JAN 2025

SW-4, 26 DEC 2024 to 23 JAN 2025