

# LOHLA THREE DEPARTURE (RNAV)

AL-662 (FAA)

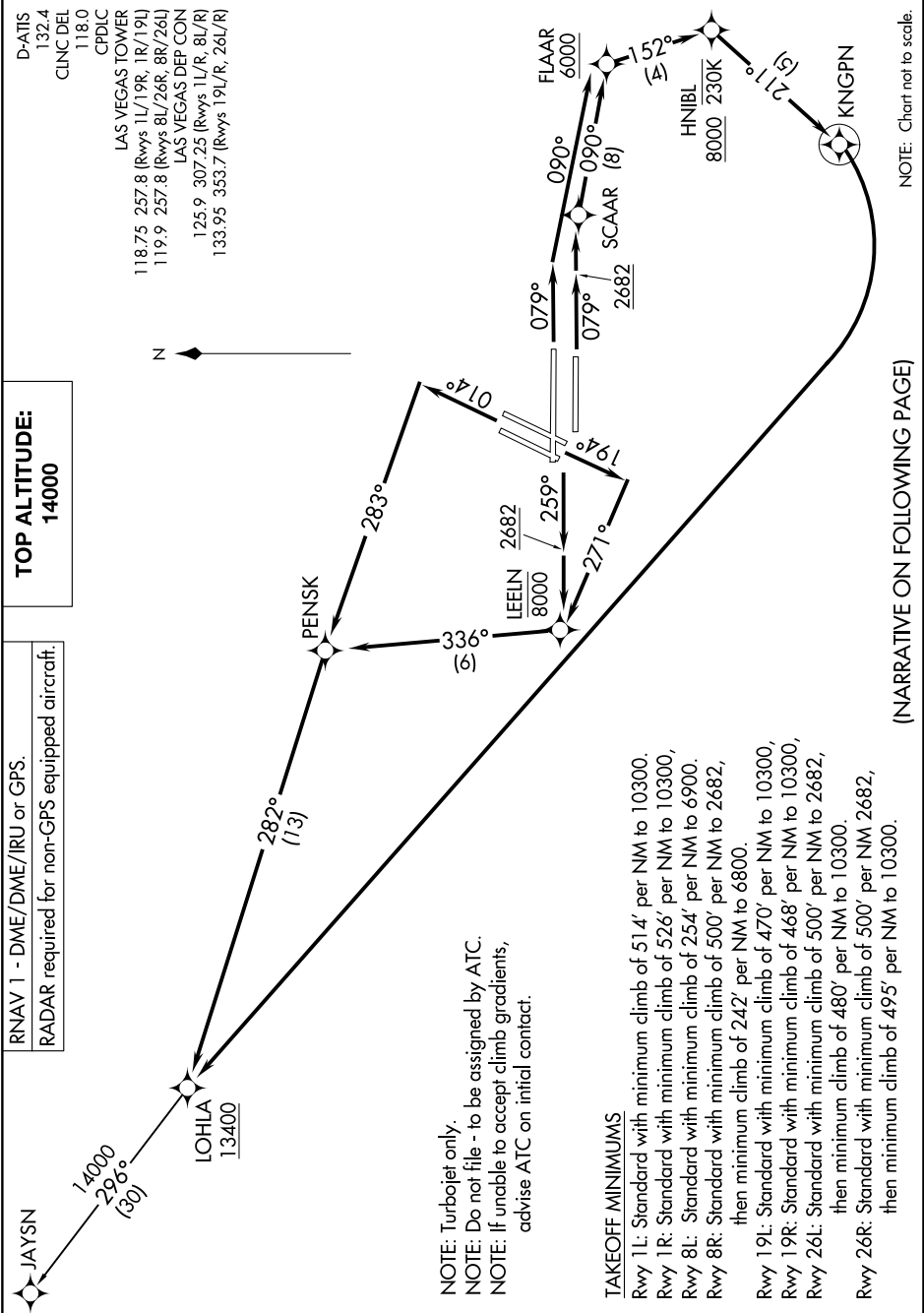
HARRY REID INTL (LAS)  
LAS VEGAS, NEVADA

SW-4, 26 DEC 2024 to 23 JAN 2025

D-ATIS 132.4  
 CLNC DEL 118.0  
 CPDLC  
 LAS VEGAS TOWER  
 118.75 257.8 (Rwys 1L/19R, 1R/19L)  
 119.9 257.8 (Rwys 8L/26R, 8R/26L)  
 LAS VEGAS DEP CON  
 125.9 307.25 (Rwys 1L/R, 8L/R)  
 133.95 353.7 (Rwys 19L/R, 26L/R)

**TOP ALTITUDE:**  
**14000**

RNAV 1 - DME/DME/IRU or GPS.  
 RADAR required for non-GPS equipped aircraft.



NOTE: Turbojet only.  
 NOTE: Do not file - to be assigned by ATC.  
 NOTE: If unable to accept climb gradients,  
 advise ATC on initial contact.

**TAKEOFF MINIMUMS**  
 Rwy 1L: Standard with minimum climb of 514' per NM to 10300.  
 Rwy 1R: Standard with minimum climb of 526' per NM to 10300,  
 Rwy 8L: Standard with minimum climb of 254' per NM to 6900.  
 Rwy 8R: Standard with minimum climb of 500' per NM to 2682,  
 then minimum climb of 242' per NM to 6800.  
 Rwy 19L: Standard with minimum climb of 470' per NM to 10300,  
 Rwy 19R: Standard with minimum climb of 468' per NM to 10300,  
 Rwy 26L: Standard with minimum climb of 500' per NM to 2682,  
 then minimum climb of 480' per NM to 10300.  
 Rwy 26R: Standard with minimum climb of 500' per NM 2682,  
 then minimum climb of 495' per NM to 10300.

NOTE: Chart not to scale.

(NARRATIVE ON FOLLOWING PAGE)

SW-4, 26 DEC 2024 to 23 JAN 2025