

# MCCARRAN SEVEN DEPARTURE

AL-662 (FAA)

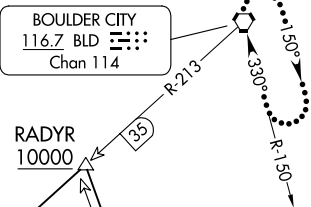
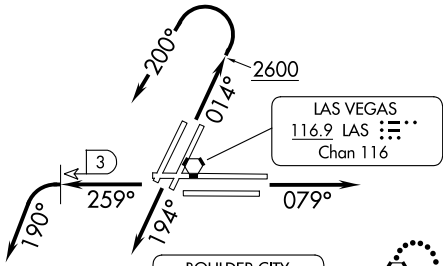
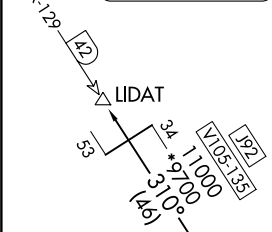
HARRY REID INTL (LAS)  
LAS VEGAS, NEVADA

RADAR and DME required.

**TOP ALTITUDE:  
ASSIGNED BY ATC**

LAS VEGAS DEP CON  
125.9 307.25  
D-ATIS  
132.4  
CLNC DEL  
118.0  
GND CON  
121.1 270.8 E of 1R/19L  
121.9 254.3 W of 1L/19R  
LAS VEGAS TOWER  
118.75 257.8 (Rwys 1L/19R, 1R/19L)  
119.9 257.8 (Rwys 8L/26R, 8R/26L)

COALDALE  
117.7 OAL :---  
Chan 124

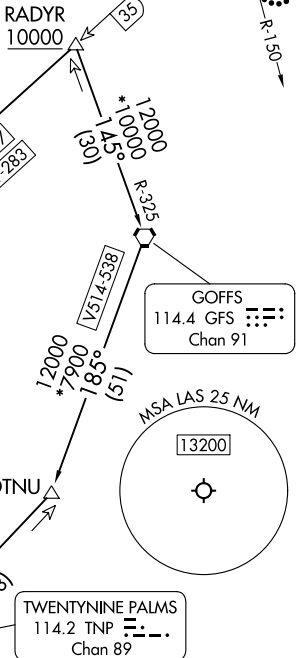


NOTE: Rwys 1L/R: 3229' MSL monument, 3 NM north of DER. Numerous buildings from 0.6 NM northwest to 2.5 NM north of DER, up to 2779' MSL.

HECTOR  
112.7 HEC :---  
Chan 74

### TAKEOFF MINIMUMS

Rwys 1L/R: Standard with minimum climb of 526'/NM to 7000.  
Rwys 8L/R: Standard with minimum climb of 440'/NM to 7000.  
Rwys 19L/R, 26L/R: Standard with minimum climb of 410'/NM to 7000.



(CONTINUED ON FOLLOWING PAGE)

NOTE: Chart not to scale.

SW-4, 26 DEC 2024 to 23 JAN 2025

SW-4, 26 DEC 2024 to 23 JAN 2025

# MCCARRAN SEVEN DEPARTURE