

N11TZ FOUR DEPARTURE (RNAV) Departure Routes

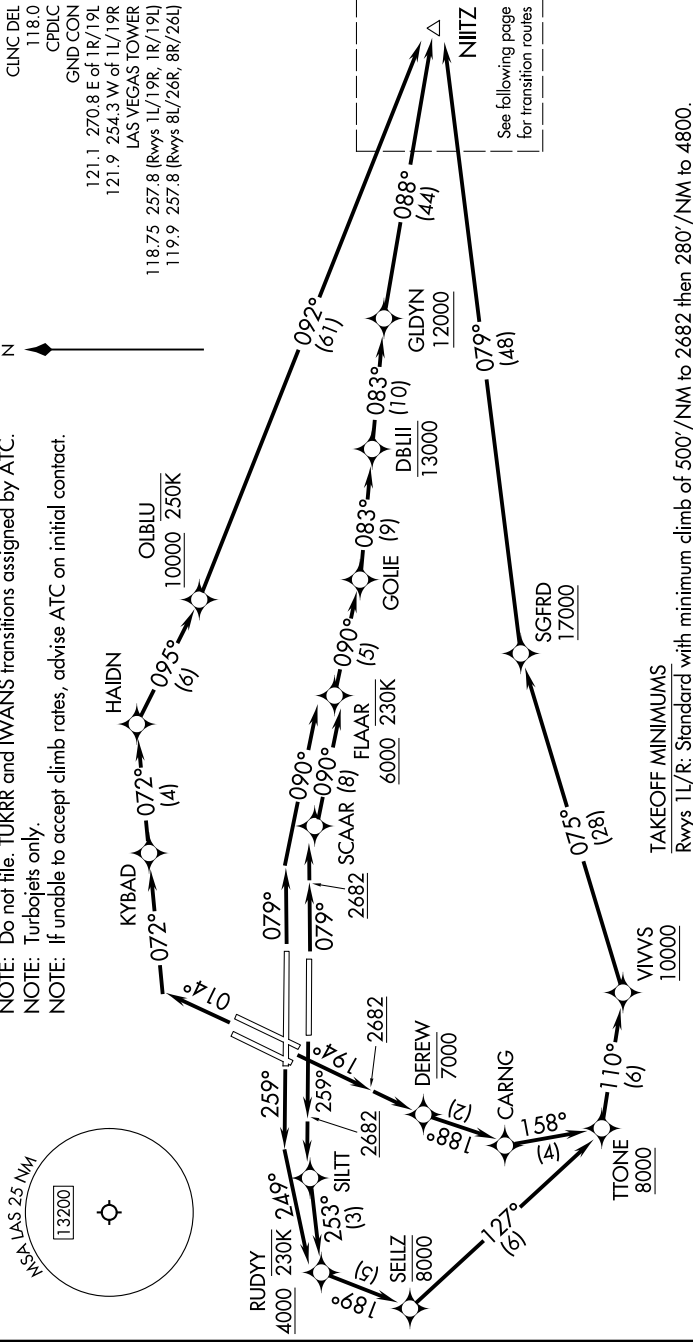
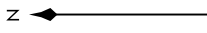
SW-4, 26 DEC 2024 to 23 JAN 2025

TOP ALTITUDE:
FL190

RNAV 1 - DME/DME/IRU or GPS.
RADAR required for non-GPS equipped aircraft.

NOTE: Do not file. TUKRR and IWANS transitions assigned by ATC.
NOTE: Turbojets only.
NOTE: If unable to accept climb rates, advise ATC on initial contact.

LAS VEGAS DEP CON
125.9 307.25 (Rwys 19L/R, 26L/R)
133.95 353.7 (Rwys 1L/R, 8L/R)
D-ATIS
132.4
CLINC DEL
118.0
CPDIC
GND CON
121.1 270.8 E of 1R/19L
121.9 254.3 W of 1L/19R
LAS VEGAS TOWER
118.75 257.8 (Rwys 1L/19R, 1R/19L)
119.9 257.8 (Rwys 8L/26R, 8R/26L)



TAKEOFF MINIMUMS
Rwys 1L/R: Standard with minimum climb of 500'/NM to 2682 then 280'/NM to 4800.
Rwys 8L/R: Standard with minimum climb of 500'/NM to 2682.
Rwys 19L/R: Standard with minimum climb of 571'/NM to 8000.
Rwys 26L/R: Standard with minimum climb of 500'/NM to 2682 then 240'/NM to 5000.

NOTE: Chart not to scale.

(CONTINUED ON FOLLOWING PAGE)

SW-4, 26 DEC 2024 to 23 JAN 2025

N11TZ FOUR DEPARTURE (RNAV) Departure Routes