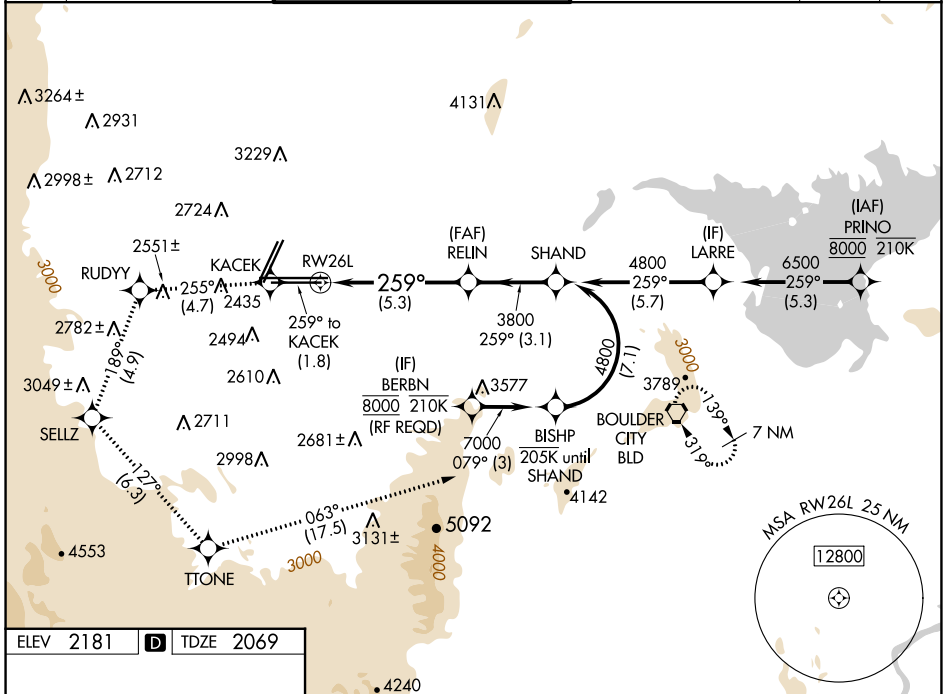


APP CRS	Rwy Idg	10526
259°	TDZE	2069
	Apt Elev	2181

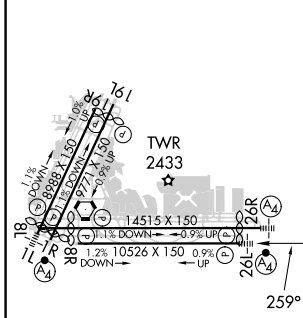
RNAV (RNP) RWY 26L

HARRY REID INTL (LAS)

RNP AR APCH.		MALSF	MISSED APPROACH: Climb to 7000 on the RNAV missed approach route to BLD VORTAC and hold. *Missed approach requires minimum climb of 255 feet per NM to 3200.		
For uncompensated Baro-VNAV systems, procedure NA below 0°C or above 54°C.					
D-ATIS	LAS VEGAS APP CON	LAS VEGAS TOWER		GND CON	CLNC DEL
132.4	125.025 379.15 (West) 119.775 282.2 (East)	118.75 257.8 (Rwy 1L/19R, 1R/19L) 119.9 257.8 (Rwy 8L/26R, 8R/26L)		121.1 270.8 E of 1R/19L 121.9 254.3 W of 1L/19R	118.0 CPDLC



ELEV	2181	D	TDZE	2069
------	-------------	----------	------	-------------



MIRL Rwy 1R-19L	REIL Rwy 1R, 8R, 19L and 19R	HIRL Rwy 1L-19R, 8L-26R and 8R-26L
-----------------	------------------------------	------------------------------------

7000	KACEK	RUDYY	SELLZ	TTONE	BLD
↑	◆	◆	◆	◆	◆
tr 259°	tr 255°	tr 189°	tr 127°	tr 063°	
VGSI and RNAV glidepath not coincident (VGSI Angle 3.00/TCH 84). See planview for multiple IF locations.					
RELIN		SHAND			
3800		4800			
RW26L		259°		GP 3.00°	
5.3 NM		3.1 NM		TCH 60	
CATEGORY	A	B	C	D	
RNP 0.30 DA*	2450-7/8		381 (300-7/8)		
RNP 0.30 DA	2502-1		433 (400-1)		
AUTHORIZATION REQUIRED					

SW-4, 26 DEC 2024 to 23 JAN 2025

SW-4, 26 DEC 2024 to 23 JAN 2025