

APP CRS	Rwy Idg	8808
194°	TDZE	2112
	Apt Elev	2181

RNAV (RNP) Z RWY 19L

HARRY REID INTL (LAS)

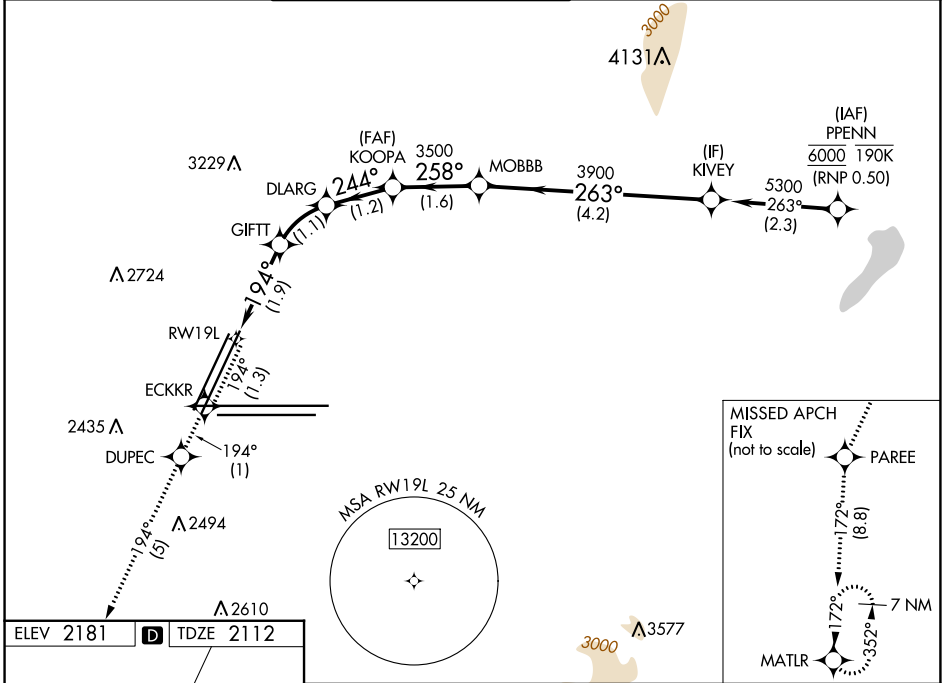
RNP AR APCH-GPS, RF, min RNP 0.50. Authorization required.
Missed approach requires RNP <1.00.

MISSED APPROACH: Climb to 7000 on the RNAV missed approach route to MATLR and hold, continue climb-in-hold to 7000.

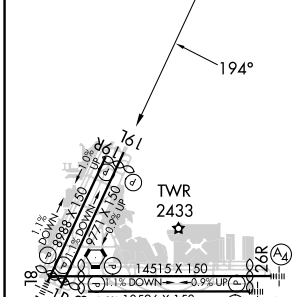
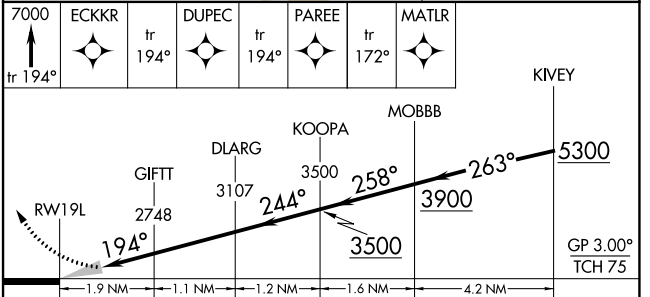
▼ For uncompensated Baro-VNAV systems, procedure NA below 0°C or above 54°C.

*Missed approach requires minimum climb of 208 feet per NM to 4880.

D-ATIS 132.4	LAS VEGAS APP CON	LAS VEGAS TOWER	GND CON	CLNC DEL	CPDLC
	125.025 379.15 (West) 119.775 282.2 (East)	118.75 257.8 (Rwy 1L/19R, 1R/19L) 119.9 257.8 (Rwy 8L/26R, 8R/26L)	121.1 270.8 E of 1R/19L 121.9 254.3 W of 1L/19R	118.0	



ELEV 2181	D	TDZE 2112
-----------	----------	-----------



CATEGORY	A	B	C	D
RNP 0.10 DA*	2471-1		359 (300-1)	
RNP 0.30 DA	2559-1 3/8		447 (400-1 3/8)	

MIRL Rwy 1R-19L
REIL Rwy 1R, 8R, 19L and 19R
HIRL Rwy 1L-19R, 8L-26R and 8R-26L

AUTHORIZATION REQUIRED

SW-4, 26 DEC 2024 to 23 JAN 2025

SW-4, 26 DEC 2024 to 23 JAN 2025