

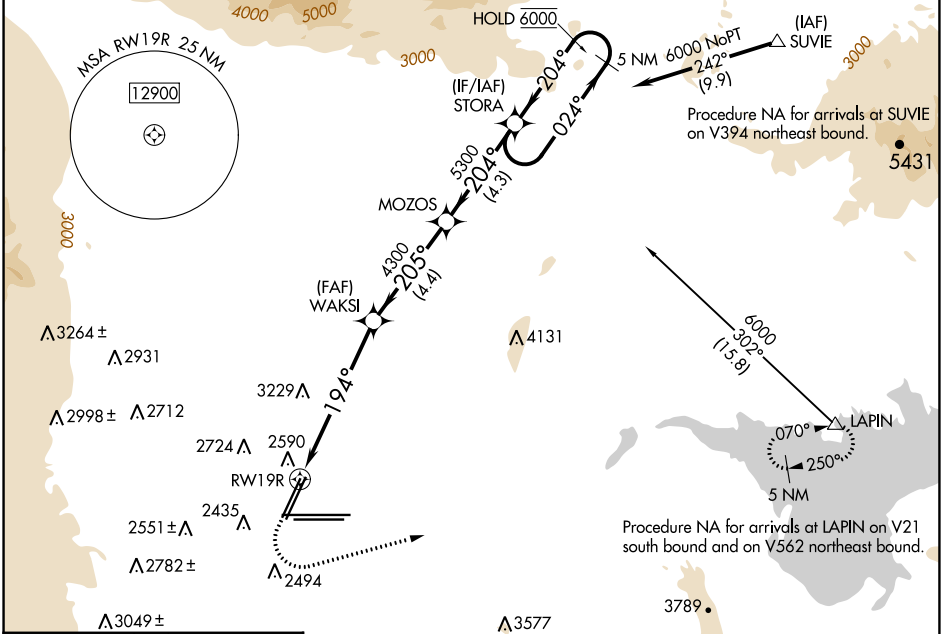
WAAS CH 50142 W19B	APP CRS 194°	Rwy Idg TDZE Apt Elev	8417 2117 2181
--	------------------------	-----------------------------	---

RNAV (GPS) Y RWY 19R

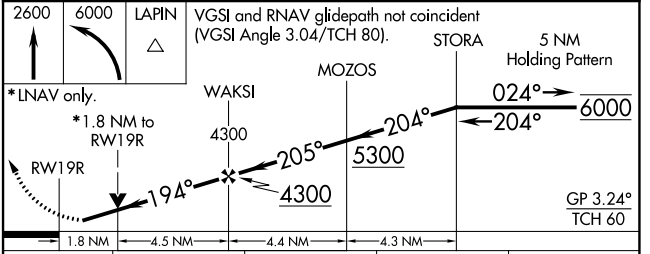
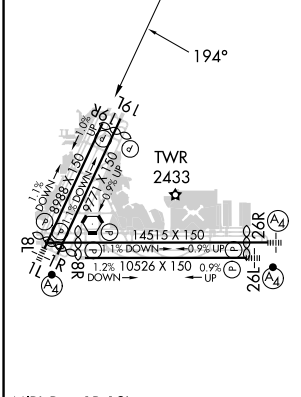
HARRY REID INTL (LAS)

RNP APCH-GPS.		MISSED APPROACH: Climb to 2600 then climbing left turn to 6000 direct LAPIN and hold.	
<p>▼ Rwy 19R helicopter visibility reduction below 3/4 SM NA. For uncompensated Baro-VNAV systems, LNAV/VNAV NA below 0°C or above 54°C.</p>			

D-ATIS 132.4	LAS VEGAS APP CON 125.025 379.15 (West) 119.775 282.2 (East)	LAS VEGAS TOWER 118.75 257.8 (Rwy 1L/19R, 1R/19L) 119.9 257.8 (Rwy 8L/26R, 8R/26L)	GND CON 121.1 270.8 E of 1R/19L 121.9 254.3 W of 1L/19R	CLNC DEL 118.0	CPDLC
------------------------	--	--	---	--------------------------	-------



ELEV 2181	D	TDZE 2117
-----------	----------	-----------



CATEGORY	A	B	C	D
LPV DA	2367-3/4	250 (200-3/4)		
LNAV/VNAV DA	2743-1 3/4	626 (600-1 3/4)		
LNAV MDA	2840-1	723 (700-1)	2840-2	723 (700-2)
C CIRCLING	3020-1 1/4 839 (900-1 1/4)	3060-1 1/4 879 (900-1 1/4)	3100-2 3/4 919 (1000-2 3/4)	3540-3 1359 (1400-3)

MIRL Rwy 1R-19L
REIL Rwy 1R, 8R, 19L and 19R
HIRL Rwy 1L-19R, 8L-26R and 8R-26L

SW-4, 26 DEC 2024 to 23 JAN 2025

SW-4, 26 DEC 2024 to 23 JAN 2025