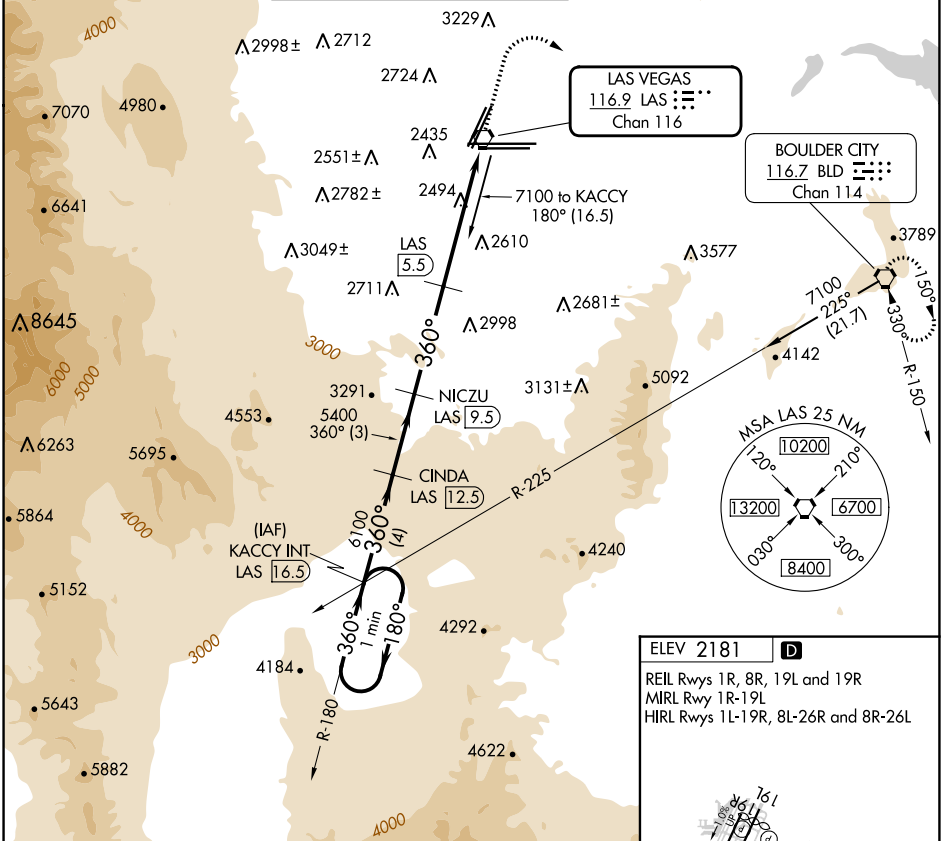


| | | | |
|--|------------------------|-----------------------------|---|
| VORTAC LAS 116.9 Chan 116 | APP CRS 360° | Rwy Idg TDZE Apt Elev | N/A N/A 2181 |
|--|------------------------|-----------------------------|---|

VOR/DME-A
HARRY REID INTL (LAS)

| | | | | | |
|------------------------|---|--|---|--------------------------|-------|
| D-ATIS 132.4 | LAS VEGAS APP CON 125.025 379.15 (West) 119.775 282.2 (East) | LAS VEGAS TOWER 118.75 257.8 (Rwy 1L/19R, 1R/19L) 119.9 257.8 (Rwy 8L/26R, 8R/26L) | GND CON 121.1 270.8 E of 1R/19L 121.9 254.3 W of 1L/19R | CLNC DEL 118.0 | CPDLC |
| | <p>MISSED APPROACH: Climb to 5000 then climbing right turn to 6000 direct BLD VORTAC and hold.</p> | | | | |



SW-4, 26 DEC 2024 to 23 JAN 2025

SW-4, 26 DEC 2024 to 23 JAN 2025

