


WAAS CH 42814 W14A	APP CRS 141°	Rwy Idg TDZE Apf Elev	6007 64 64
--	------------------------	-----------------------------	---------------------------------------

RNAV (GPS) RWY 14

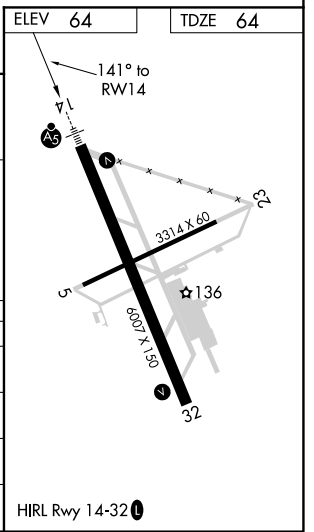
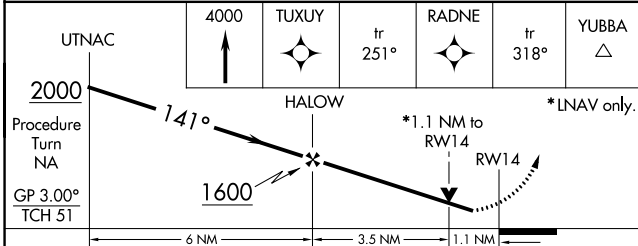
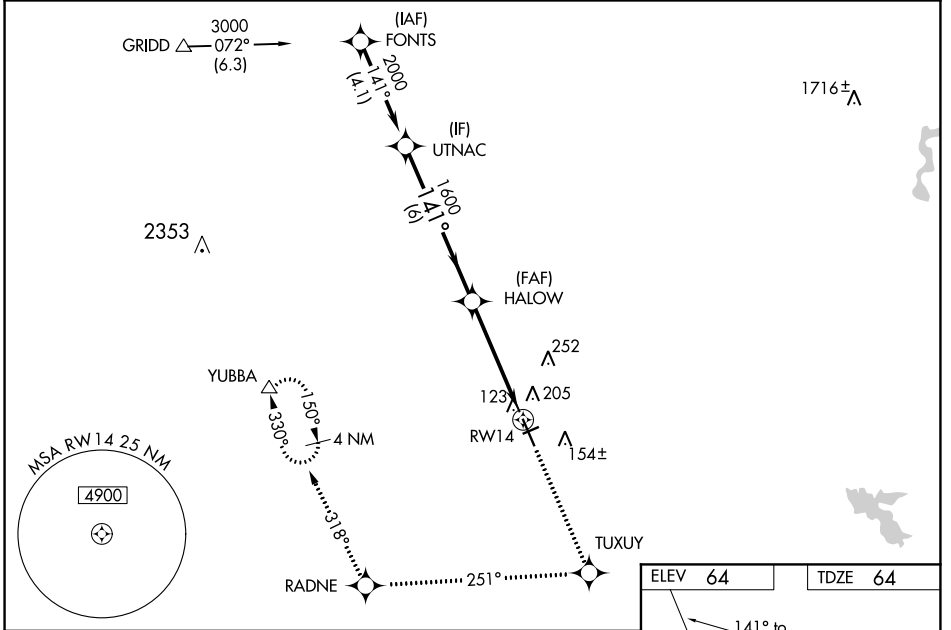
YUBA COUNTY (MYV)

⚠ For uncompensated Baro-VNAV systems, LNAV/VNAV NA below -1.5°C (5°F) or above 54°C (130°F). DME/DME RNP-0.3 NA. Helicopter visibility reduction below ¾ SM NA. Baro-VNAV and VDP NA when using Lincoln altimeter setting. When local altimeter setting not received, use Lincoln altimeter setting and increase LPV DA to 308 feet, LNAV/VNAV DA to 514 feet and all MDA 60 feet; increase LNAV/VNAV all Cats visibility ½ mile, LNAV Cats C/D visibility ½ mile. Inop table does not apply to LPV all Cats. For inop MALSRL increase LNAV Cats A/B visibility ¼ mile. Night landing: Rwy 5, 23 NA.

MALSRL


MISSED APPROACH:
 Climb to 4000 direct TUXUY and via track 251° to RADNE and via track 318° to YUBBA and hold.

ASOS 118.475	NORCAL APP CON 125.4 259.1	UNICOM 123.05 (CTAF) 
------------------------	--------------------------------------	--



CATEGORY	A	B	C	D
LPV DA		264-¾	200 (200-¾)	
LNAV/VNAV DA		470-⅞	406 (500-⅞)	
LNAV MDA		500-¾	436 (500-¾)	
CIRCLING	540-1	476 (500-1)	540-1½ 476 (500-1½)	620-2 556 (600-2)

SW-2, 26 DEC 2024 to 23 JAN 2025

SW-2, 26 DEC 2024 to 23 JAN 2025