

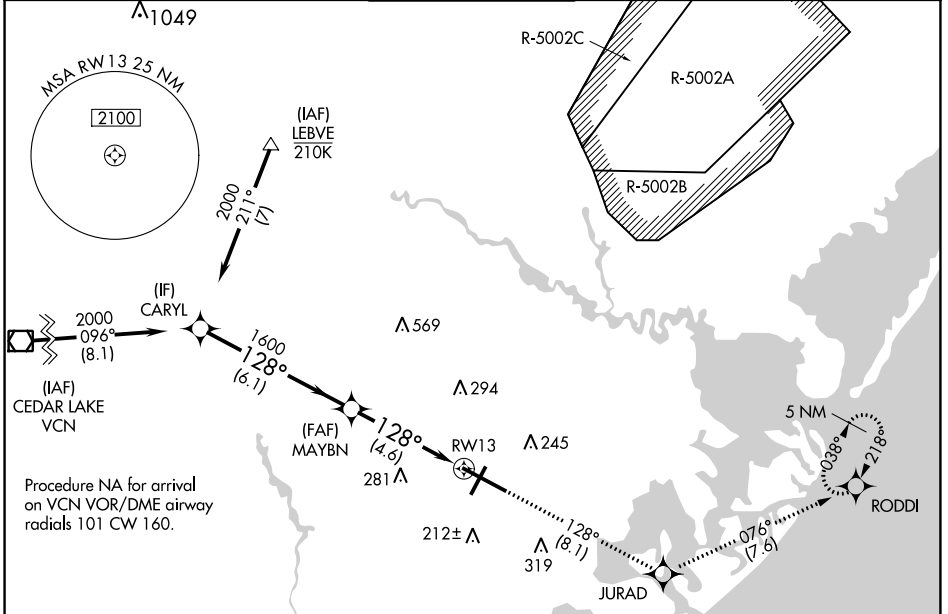
APP CRS	Rwy ldg	<b>10001</b>
<b>128°</b>	TDZE	<b>75</b>
	Apt Elev	<b>75</b>

# RNAV (RNP) Z RWY 13

ATLANTIC CITY INTL (ACY)

 <b>NA</b> For uncompensated Baro-VNAV systems, procedure NA below -13°C (9°F) or above 54°C (130°F). GPS required. For inop ALS, increase RNP 0.30 all Cats visibility to RVR 6000.	 <b>MALS</b>	<b>MISSED APPROACH:</b> Climb to 2000 on track 128° to JURAD and on track 076° to RODDI and hold.

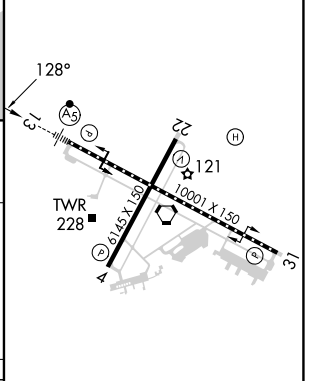
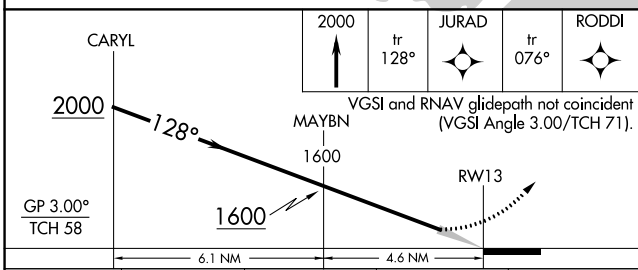
ATIS	ATLANTIC CITY APP CON	ATLANTIC CITY TOWER	GND CON	CLNC DEL
<b>125.725 316.15</b>	<b>124.6 327.125</b>	<b>120.3 239.0</b>	<b>121.9 284.6</b>	<b>127.85 353.775</b>



NE-2, 26 DEC 2024 to 23 JAN 2025

NE-2, 26 DEC 2024 to 23 JAN 2025

ELEV	<b>75</b>	<b>D</b>	TDZE	<b>75</b>
------	-----------	----------	------	-----------



CATEGORY	A	B	C	D
RNP 0.30 DA		442/40	367 (400-¾)	

**AUTHORIZATION REQUIRED**

TDZ/CL Rwy 13  
 HIRL Rwy 4-22 and 13-31  
 REIL Rwy 31