

APP CRS	Rwy ldg	10001
308°	TDZE	63
	Apt Elev	75

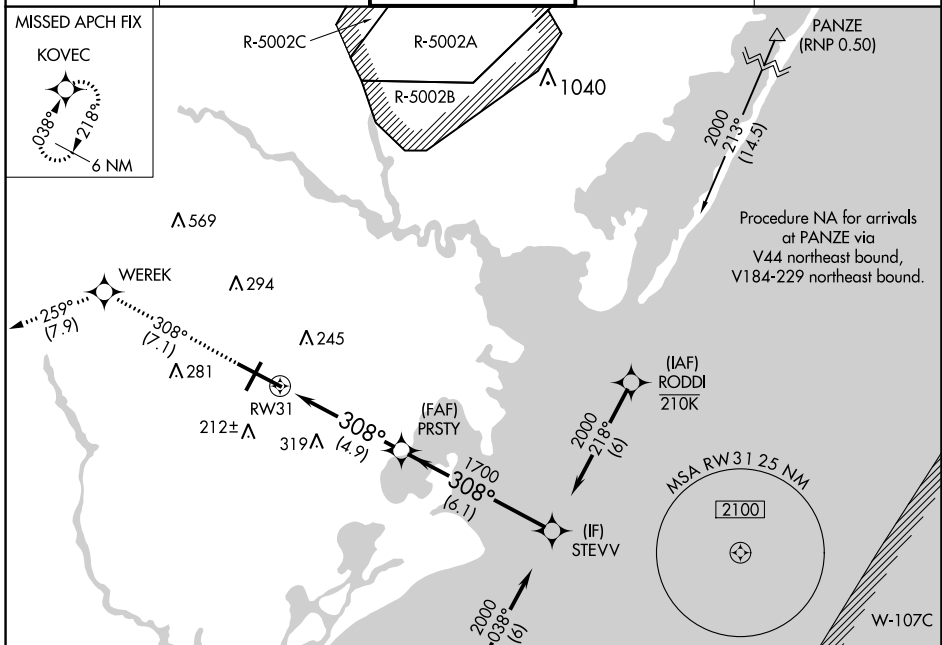
RNAV (RNP) Z RWY 31

ATLANTIC CITY INTL (ACY)

GPS Required. Procedure NA at night.
 For uncompensated Baro-VNAV systems, procedure NA below -13°C (8°F) or above 54°C (130°F).

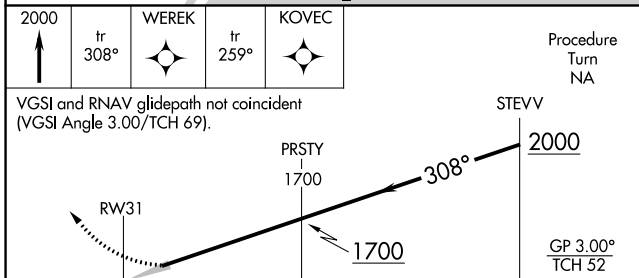
MISSED APPROACH: Climb to 2000 on track 308° to WEREK on track 259° to KOVEC and hold.

ATIS	ATLANTIC CITY APP CON	ATLANTIC CITY TOWER	GND CON	CLNC DEL
125.725 316.15	124.6 327.125	120.3 239.0	121.9 284.6	127.85 353.775

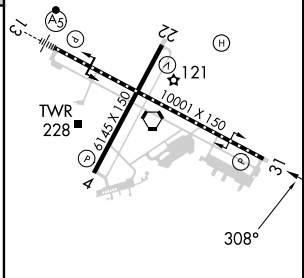


Procedure NA for arrivals on SIE VORTAC airway radials 333 CW 131.

Procedure NA for arrivals at PANZE via V44 northeast bound, V184-229 northeast bound.



ELEV	75	D	TDZE	63
------	----	----------	------	----



CATEGORY	A	B	C	D
RNP 0.30 DA		408/60	345 (400-1¼)	

AUTHORIZATION REQUIRED

TDZ/CL Rwy 13
 HIRL Rwy 4-22 and 13-31
 REIL Rwy 31

NE-2, 26 DEC 2024 to 23 JAN 2025

NE-2, 26 DEC 2024 to 23 JAN 2025