

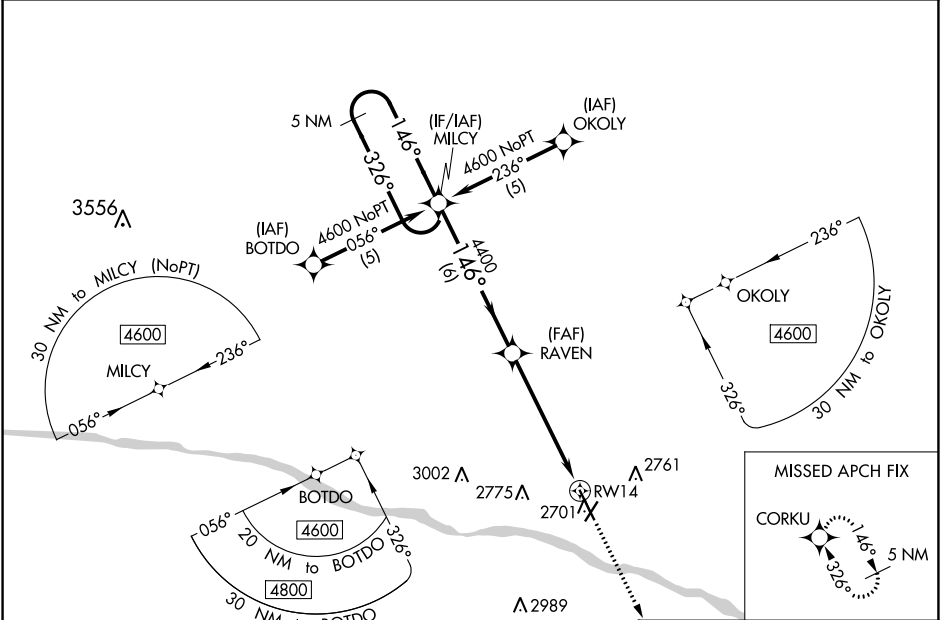
WAAS CH 65609 W14A	APP CRS 146°	Rwy Idg TDZE Apt Elev	6329 2586 2596
--	------------------------	-----------------------------	---

RNAV (GPS) RWY 14

DODGE CITY RGNL (DDC)

⚠ DME/DME RNP-0.3 NA. For uncompensated Baro-VNAV systems, LNAV/VNAV NA below -19°C (-2°F) or above 54°C (130°F). For inop ALS, increase LPV all Cats visibility to ¾ SM and LNAV/VNAV all Cats visibility to 1¾ SM.	MALSR 	MISSED APPROACH: Climb to 4600 direct CORKU and hold.
---	-----------	---

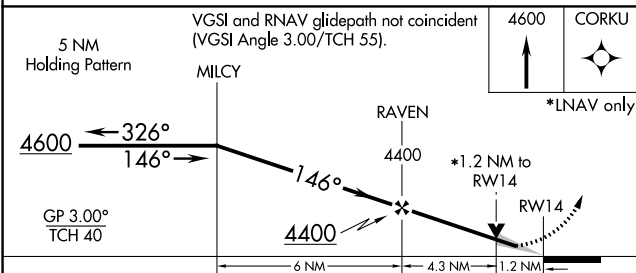
ASOS 118.525	KANSAS CITY CENTER 125.2 285.425	UNICOM 122.7 (CTAF) 0
------------------------	--	---------------------------------



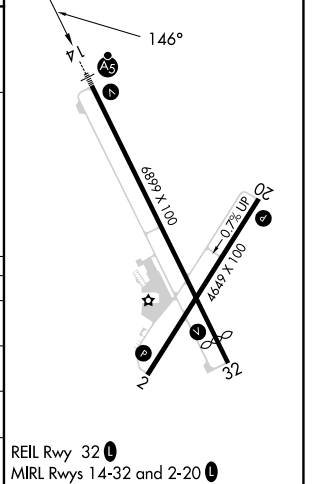
NC-2, 26 DEC 2024 to 23 JAN 2025

NC-2, 26 DEC 2024 to 23 JAN 2025

ELEV 2596	D TDZE 2586
-----------	--------------------



CATEGORY	A	B	C	D
LPV DA		2836-½	250 (300-½)	
LNAV/VNAV DA		2991-1	405 (400-1)	
LNAV MDA	3020-½	434 (500-½)	3020-¾	434 (500-¾)
C CIRCLING	3040-1 444 (500-1)	3080-1 484 (500-1)	3320-2 724 (800-2)	3320-2¼ 724 (800-2¼)



REIL Rwy 32 0
MIRL Rwy 14-32 and 2-20 0