

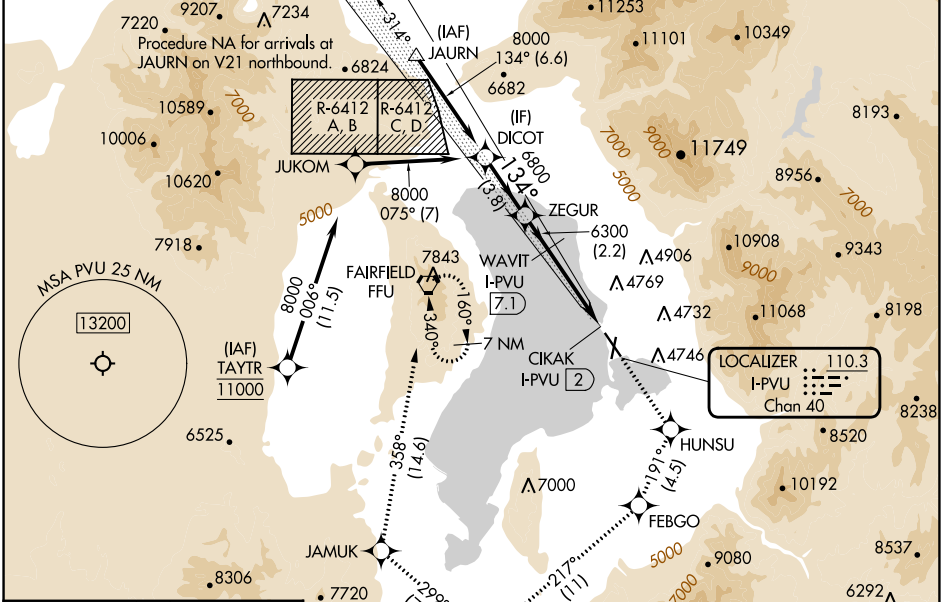
LOC/DME I-PVU <b>110.3</b> Chan 40	APP CRS <b>134°</b>	Rwy Idg <b>8599</b> TDZE <b>4497</b> Apt Elev <b>4497</b>
--	------------------------	---

# ILS or LOC RWY 13

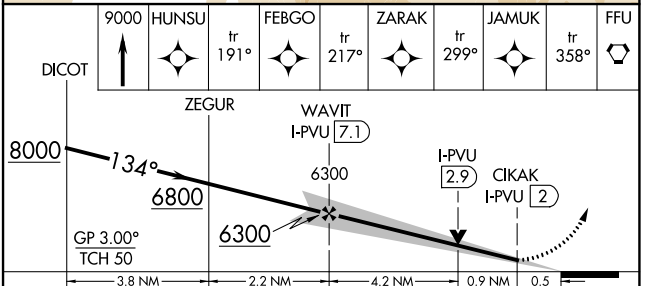
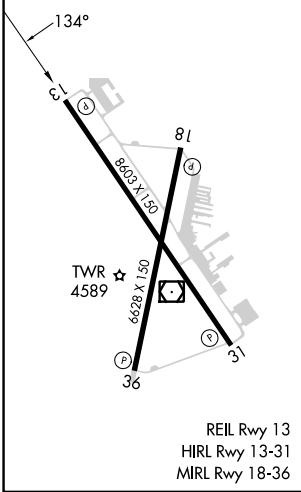
PROVO MUNI (PVU)

RNP APCH - GPS.	MISSED APPROACH: Climb to 9000 direct HUNSU and on track 191° to FEBGO and on track 217° to ZARAK and on track 299° to JAMUK and on track 358° to FFU VORTAC and hold. *Missed approach requires minimum climb of 215 feet per NM to 7760.
<p><b>▼</b> Rwy 13 helicopter visibility reduction below 3/4 SM NA.</p> <p><b>▲</b> Circling Rwy 18, 36 NA at night. When local altimeter setting not received, procedure NA. Circling NA east of Rwys 18 and 31.</p>	

ATIS* <b>135.175</b>	SALT LAKE CITY APP CON <b>118.85 233.7</b>	PROVO TOWER* <b>125.3 (CTAF)</b>	GND CON <b>119.4</b>
-------------------------	---	-------------------------------------	-------------------------



ELEV 4497	<b>D</b>	TDZE 4497
-----------	----------	-----------



CATEGORY	A	B	C	D
S-ILS 13*	4756-3/4 259 (300-3/4)			
S-ILS 13	4925-1/4 428 (500-1/4)			
S-LOC 13	4980-1 483 (500-1)		4980-1 3/8 483 (500-1 3/8)	
<b>C</b> CIRCLING	4980-1 483 (500-1)		5160-1 3/4 5280-2 1/2 663 (700-1 3/4) 783 (800-2 1/2)	

SW-4, 26 DEC 2024 to 23 JAN 2025

SW-4, 26 DEC 2024 to 23 JAN 2025